

## Product datasheet for **TP315870L**

### LIPC (NM\_000236) Human Recombinant Protein

#### Product data:

|                                       |  |
|---------------------------------------|--|
| Product Type:                         | Recombinant Proteins   |
| Description:                          | Recombinant protein of human lipase, hepatic (LIPC), 1 mg          |
| Species:                              | Human  |
| Expression Host:                      | HEK293T  |
| Expression cDNA Clone or AA Sequence: | >RC215870 representing NM_000236<br>Red=Cloning site Green=Tags(s) |

MDTSPLCFSILLVLCIFIQSSALGQSLKPEPFGRRRAQAVETNKTLEHMKTRFLLFGETNQGCQIRINHPD  
TLQECGFNSSLPLVMIIHGWSVDGVLNWIWQMVAALKSQPAQPVNVGLVDWITLAHDHYTI AVRNTLRV  
GKEVAALLRWLEESVQLSRSHVHLIGYSLGAHVSGFAGSSIGGTHKIGRITGLDAAGPLFEGSAPS NRLS  
PDDASFVD AIHTFTREHMGLSVGIKQPIGHYDFYPNGGSFQPGCHFLELYRHIAQHGFNAITQTIKCSHE  
RSVHLFIDSL LHAGTQSMAYPCGDMNSFSQGLCLSCCKKGRCNTLGYHVRQEPRSKSKRFLVTRAQSPFK  
VYHYQLKIQFINQTETPIQTFTMSLLGTKEKMQKIPITLGKGIASNKTYSLITLDVDIGELIMIKFKW  
ENSAVWANVWDTVQTIIPWSTGPRHSGLVLKTIRVKAGETQQRMTFCSENTDDLLL RPTQEKIFVKCEIK  
SKTSKRKIR

TRTRPLEQKLISEEDLAANDILDYKDDDDKV

|                |  |
|----------------|--|
| Tag:           | C-Myc/DDK  |
| Predicted MW:  | 53.5 kDa   |
| Concentration: | >0.05 µg/µL as determined by microplate BCA method   |
| Purity:        | > 80% as determined by SDS-PAGE and Coomassie blue staining  |
| Buffer:        | 25 mM Tris-HCl, 100 mM glycine, pH 7.3, 10% glycerol   |
| Preparation:   | Recombinant protein was captured through anti-DDK affinity column followed by conventional chromatography steps.                                     |
| Note:          | For testing in cell culture applications, please filter before use. Note that you may experience some loss of protein during the filtration process. |
| Storage:       | Store at -80°C.  |
| Stability:     | Stable for 12 months from the date of receipt of the product under proper storage and handling conditions. Avoid repeated freeze-thaw cycles.        |



[View online »](#)

RefSeq: [NP\\_000227](#)

Locus ID: 3990

UniProt ID: [P11150](#), [A6H8L5](#)

RefSeq Size: 1603

Cytogenetics: 15q21.3

RefSeq ORF: 1497

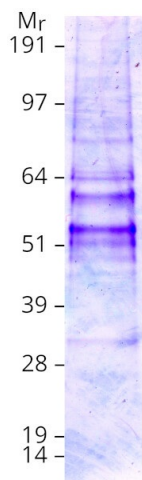
Synonyms: HDLCQ12; HL; HTGL; LIPH

**Summary:** LIPC encodes hepatic triglyceride lipase, which is expressed in liver. LIPC has the dual functions of triglyceride hydrolase and ligand/bridging factor for receptor-mediated lipoprotein uptake. [provided by RefSeq, Jul 2008]

**Protein Families:** Druggable Genome, Secreted Protein

**Protein Pathways:** Glycerolipid metabolism, Metabolic pathways

### Product images:



Coomassie blue staining of purified LIPC protein (Cat# [TP315870]). The protein was produced from HEK293T cells transfected with LIPC cDNA clone (Cat# [RC215870]) using MegaTran 2.0 (Cat# [TT210002]).