

Product datasheet for **TP315870**

LIPC (NM_000236) Human Recombinant Protein

Product data:

Product Type:	Recombinant Proteins
Description:	Recombinant protein of human lipase, hepatic (LIPC), 20 µg
Species:	Human
Expression Host:	HEK293T
Expression cDNA Clone or AA Sequence:	>RC215870 representing NM_000236 Red =Cloning site Green =Tags(s)

MDTSPLCFSILLVLCIFIQSSALGQSLKPEPFGRRRAQAVETNKTLEHMKTRFLLFGETNQGCQIRINHPD
TLQECGFNSSLPLVMIIHGWSVDGVLNWIWQMVAALKSQPAQPVNVGLVDWITLAHDHYTI AVRNTRLV
GKEVAALLRWLEESVQLSRSHVHLIGYSLGAHVSGFAGSSIGGTHKIGRITGLDAAGPLFEGSAPSNRLS
PDDASFVDIHTFTREHMGLSVGIKQPIGHYDFYPNGGSFQPGCHFLELYRHIAQHGFNAITQTIKCSHE
RSVHLFIDSL LHAGTQSMAYPCGDMNSFSQGLCLSCCKKGRCNTLGYHVRQEPRSKSKRFLVTRAQSPFK
VYHYQLKIQFINQTETPIQTFTTMSLLGTKEKMQKIPITLGKGIASNKTYSFLITLDVDIGELIMIKFKW
ENSAVWANVWDTVQTIIPWSTGPRHSGLVLKTIRVKAGETQQRMTFCSENTDDLLLRLPTQEKIFVKCEIK
SKTSKRKIR

TRTRPLEQKLISEEDLAANDILDYKDDDDKV

Tag:	C-Myc/DDK
Predicted MW:	53.5 kDa
Concentration:	>0.05 µg/µL as determined by microplate BCA method
Purity:	> 80% as determined by SDS-PAGE and Coomassie blue staining
Buffer:	25 mM Tris-HCl, 100 mM glycine, pH 7.3, 10% glycerol
Preparation:	Recombinant protein was captured through anti-DDK affinity column followed by conventional chromatography steps.
Note:	For testing in cell culture applications, please filter before use. Note that you may experience some loss of protein during the filtration process.
Storage:	Store at -80°C.
Stability:	Stable for 12 months from the date of receipt of the product under proper storage and handling conditions. Avoid repeated freeze-thaw cycles.



[View online »](#)

RefSeq: [NP_000227](#)

Locus ID: 3990

UniProt ID: [P11150](#), [A6H8L5](#)

RefSeq Size: 1603

Cytogenetics: 15q21.3

RefSeq ORF: 1497

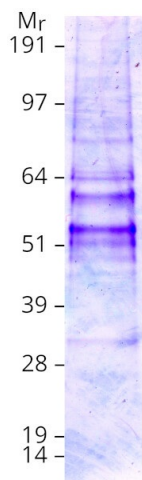
Synonyms: HDLCQ12; HL; HTGL; LIPH

Summary: LIPC encodes hepatic triglyceride lipase, which is expressed in liver. LIPC has the dual functions of triglyceride hydrolase and ligand/bridging factor for receptor-mediated lipoprotein uptake. [provided by RefSeq, Jul 2008]

Protein Families: Druggable Genome, Secreted Protein

Protein Pathways: Glycerolipid metabolism, Metabolic pathways

Product images:



Coomassie blue staining of purified LIPC protein (Cat# TP315870). The protein was produced from HEK293T cells transfected with LIPC cDNA clone (Cat# [RC215870]) using MegaTran 2.0 (Cat# [TT210002]).