

Product datasheet for **TP315860M**

Placental lactogen (CSH1) (NM_001317) Human Recombinant Protein

Product data:

Product Type:	Recombinant Proteins
Description:	Recombinant protein of human chorionic somatomammotropin hormone 1 (placental lactogen) (CSH1), transcript variant 1, 100 µg
Species:	Human
Expression Host:	HEK293T
Expression cDNA Clone or AA Sequence:	>RC215860 protein sequence Red =Cloning site Green =Tags(s)
	 MAPGSRTSLLLA FALLCLPWLQEAGAVQTVPLSRLFDHAMLQAHRAHQLAIDTYQEFEEYIPKDQKYSF LHDSQTSFCFSDSIPTPSNMEETQQKSNLELLRISLLLI ESWL EPVRFLRSMFANNLVYDTSDDYHLL KDLEEGIQ TLMGRLEDGSRRTGQILKQTYSKFD TNSHNHDALLKNYGLLYCFRKDMDKVETFLRMVQCRS VEGSCGF TRTRPLEQKLISEEDLAANDILDYKDDDDKV
Tag:	C-Myc/DDK
Predicted MW:	24.8 kDa
Concentration:	>0.05 µg/µL as determined by microplate BCA method
Purity:	> 80% as determined by SDS-PAGE and Coomassie blue staining
Buffer:	25 mM Tris-HCl, 100 mM glycine, pH 7.3, 10% glycerol
Preparation:	Recombinant protein was captured through anti-DDK affinity column followed by conventional chromatography steps.
Note:	For testing in cell culture applications, please filter before use. Note that you may experience some loss of protein during the filtration process.
Storage:	Store at -80°C.
Stability:	Stable for 12 months from the date of receipt of the product under proper storage and handling conditions. Avoid repeated freeze-thaw cycles.
RefSeq:	<u>NP_001308</u>
Locus ID:	1442



[View online »](#)

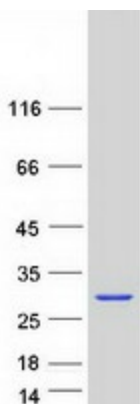
UniProt ID: [P01243](#), [P0DML2](#), [P0DML3](#), [A8K6C2](#)
RefSeq Size: 934
Cytogenetics: 17q23.3
RefSeq ORF: 651
Synonyms: CS-1; CSA; CSMT; GHB3; hCS-1; hCS-A; PL

Summary: The protein encoded by this gene is a member of the somatotropin/prolactin family of hormones and plays an important role in growth control. The gene is located at the growth hormone locus on chromosome 17 along with four other related genes in the same transcriptional orientation; an arrangement which is thought to have evolved by a series of gene duplications. Although the five genes share a remarkably high degree of sequence identity, they are expressed selectively in different tissues. Alternative splicing generates additional isoforms of each of the five growth hormones, leading to further diversity and potential for specialization. This particular family member is expressed mainly in the placenta and utilizes multiple transcription initiation sites. Expression of the identical mature proteins for chorionic somatomammotropin hormones 1 and 2 is upregulated during development, although the ratio of 1 to 2 increases by term. Mutations in this gene result in placental lactogen deficiency and Silver-Russell syndrome. [provided by RefSeq, Jul 2008]

Protein Families: Druggable Genome

Protein Pathways: Jak-STAT signaling pathway, Neuroactive ligand-receptor interaction

Product images:



Coomassie blue staining of purified CSH1 protein (Cat# [TP315860]). The protein was produced from HEK293T cells transfected with CSH1 cDNA clone (Cat# [RC215860]) using MegaTran 2.0 (Cat# [TT210002]).