

## Product datasheet for **TP315855**

### **RNS10 (RNASE10) (NM\_001012975) Human Recombinant Protein**

#### Product data:

Product Type:	Recombinant Proteins
Description:	Recombinant protein of human ribonuclease, RNase A family, 10 (non-active) (RNASE10), 20 µg
Species:	Human
Expression Host:	HEK293T
Expression cDNA	>RC215855 protein sequence
Clone or AA Sequence:	Red=Cloning site Green=Tags(s)

MKLNLVQIFFMLLMLLLGLGMGLGLGLHMATAVLEESDQPLNEFWSSDSQDKAEATEEGDGTQTTELVL  
SNKEVQPGWPEDPILGEDEVGGNKMLRASALFQSNKDYLRDQTDRECNDMMAHKMKEPSQSCIAQYAF  
IHEDLNTVKAVCNSPVIACELKGGKCHKSSRPFDLTLCELSQPDQVTPNCNYLTSVIKKHIIITCNDMKR  
QLPTGQ

TRTRPLEQKLISEEDLAANDILDYKDDDDKV

Tag:	C-Myc/DDK
Predicted MW:	23.8 kDa
Concentration:	>0.05 µg/µL as determined by microplate BCA method
Purity:	> 80% as determined by SDS-PAGE and Coomassie blue staining
Buffer:	25 mM Tris-HCl, 100 mM glycine, pH 7.3, 10% glycerol
Preparation:	Recombinant protein was captured through anti-DDK affinity column followed by conventional chromatography steps.
Note:	For testing in cell culture applications, please filter before use. Note that you may experience some loss of protein during the filtration process.
Storage:	Store at -80°C.
Stability:	Stable for 12 months from the date of receipt of the product under proper storage and handling conditions. Avoid repeated freeze-thaw cycles.
RefSeq:	<a href="#">NP_001012993</a>
Locus ID:	338879
UniProt ID:	<a href="#">Q5GAN6</a> , <a href="#">W0UTC4</a>



[View online »](#)

RefSeq Size: 651

Cytogenetics: 14q11.2

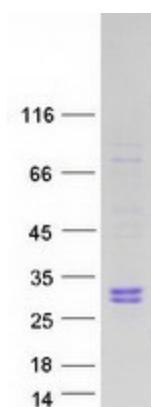
RefSeq ORF: 648

Synonyms: RAH1; RNASE9

**Summary:** Secreted proximal epididymal protein required for post-testicular sperm maturation and male fertility. May be involved in sperm adhesion to the egg zona pellucida. Does not have ribonuclease activity (By similarity).[UniProtKB/Swiss-Prot Function]

**Protein Families:** Secreted Protein, Transmembrane

### Product images:



Coomassie blue staining of purified RNASE10 protein (Cat# TP315855). The protein was produced from HEK293T cells transfected with RNASE10 cDNA clone (Cat# [RC215855]) using MegaTran 2.0 (Cat# [TT210002]).