

Product datasheet for **TP315853**

FKBP15 (NM_015258) Human Recombinant Protein

Product data:

Product Type: Recombinant Proteins
Description: Recombinant protein of human FK506 binding protein 15, 133kDa (FKBP15), 20 µg
Species: Human
Expression Host: HEK293T
Expression cDNA >RC215853 representing NM_015258
Clone or AA Sequence: Red=Cloning site Green=Tags(s)

MFGAGDEDDTDFLSPSGGARLASLFLGLDQAAAGHGNEFFQYTAPKQPKKGQGTAAATGNQATPKTAPATMS
TPTILVATAVHAYRYTNGQYVKQGFKAVALGNHTAREYRILLYISQQQPVTVARIHVNFMVRPNNYS
TFYDDQRQNW SIMFESEKAAVEFNKQVCIACNSTSSLDVLSQDLIVADGPAVEVGD SLEVAYTGWLFQ
NHVLGQVFDSTANKDKLLRLKLGSGKVIKGWEDGMLGMKKGKRLIVPPACAVGSEGVIGWTQATDSIL
VFEVEVRRVKFARDSGSDGHSVSSRDSAAPSPIGADNLSADPVVSPPTSIPFKSGEPALRTKSNLSSEQ
LAINTSPDAVKAKLISRMAMKMGQPMLPILPPQLDSNDSEIEDVNTLQGGGQPVVTPSVQPSLHPAHPALP
QMTSQAPQPSVTGLQAPSAALMQVSSLD SHSAVSGNAQSFQPYAGMQAYYPQASAVTSQLQPV RPLYPA
PLSQPPHFQSGDMASFLMTEARQHNT EIRMAVSKVADKMDHLMTKVEELQKHSAGNSMLIPSMSVTMET
SMIMSNIRIIEENERLKQEILEKSNRIEEQNDKISELIERNQRYVEQSNLMMMEKRNNLSQTATENTQAR
VLHAEQEKAKVTEELAAATAQVSHLQLKMTAHQK KETELQMQLTESLKETDLLRGQLTKVQAKLSELQET
SEQAQSKFKSEKQNRKQLELKVTSLEEELTDLRVEKESLEKNLSERKKKSAQERSQAE EEEIDEIRKSYQE
ELDKLRQLLKKTRVSTDQAAAEQLSLVQAE LQTQWEAKCEHLLASAKDEHLQYQEVCAQRDAYQQKLVQ
LQEKCLALQAQITALTKQNEQH IKELEKNKSQMSGVEAAASDPSEKVKKIMNQVFQSLRREFELEESYNG
RTILGTIMNTIKMVTLLNQQEQEKEESSSEEEEEKAEERPRRPSQEQSASASSGQPQAPLNRRERPES P
MVPSEQVVEEAVPLPPQALTTSQDGHRRKGDSEAEALSEIKDGS LPPPELSCIPSHRVLGPPTSIPPEPLG
PVSMDSECEESLAASPMMAAKPDNPSGKVCVREVPDGPLQESSTRLSLTS DPEEGDPLALGPESPGEPQP
PQLKKDDVTSSTGPHKELSSTEAGSTVAGAALRPSHHSQRSSLSGDEEDELFGATL KALRPKAQPEEED
EDEVSMKGRPPPTPLFGDDDDDDIDWLG

TRTRPLEQKLISEEDLAANDILDYKDDDDKV

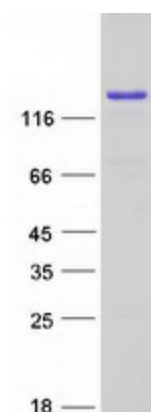
Tag: C-Myc/DDK
Predicted MW: 133.4 kDa
Concentration: >0.05 µg/µL as determined by microplate BCA method
Purity: > 80% as determined by SDS-PAGE and Coomassie blue staining



[View online »](#)

Buffer:	25 mM Tris-HCl, 100 mM glycine, pH 7.3, 10% glycerol
Preparation:	Recombinant protein was captured through anti-DDK affinity column followed by conventional chromatography steps.
Note:	For testing in cell culture applications, please filter before use. Note that you may experience some loss of protein during the filtration process.
Storage:	Store at -80°C.
Stability:	Stable for 12 months from the date of receipt of the product under proper storage and handling conditions. Avoid repeated freeze-thaw cycles.
RefSeq:	NP_056073
Locus ID:	23307
UniProt ID:	Q5T1M5
RefSeq Size:	4336
Cytogenetics:	9q32
RefSeq ORF:	3657
Synonyms:	FKBP133; KIAA0674; PPP1R76
Summary:	May be involved in the cytoskeletal organization of neuronal growth cones. Seems to be inactive as a PPIase (By similarity). Involved in the transport of early endosomes at the level of transition between microfilament-based and microtubule-based movement.[UniProtKB/Swiss-Prot Function]
Protein Families:	Druggable Genome

Product images:



Coomassie blue staining of purified FKBP15 protein (Cat# TP315853). The protein was produced from HEK293T cells transfected with FKBP15 cDNA clone (Cat# [RC215853]) using MegaTran 2.0 (Cat# [TT210002]).