

Product datasheet for **TP315809M**

TIGD6 (NM_030953) Human Recombinant Protein

Product data:

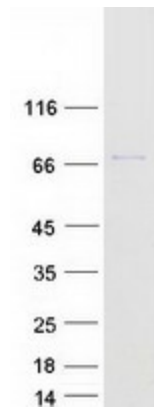
Product Type:	Recombinant Proteins
Description:	Recombinant protein of human tigger transposable element derived 6 (TIGD6), 100 µg
Species:	Human
Expression Host:	HEK293T
Expression cDNA Clone or AA Sequence:	>RC215809 protein sequence Red =Cloning site Green =Tags(s)
	<p>MANKGNKKRRQFSLEEKMKVVGAVDSGKRKGDVAKEFGITPSTLSTFLKDRTKFEEKVREASVGPQRKRM RSALYDDIDKAVFAWFQEIHAKNILVTGSVIRKKALNLANMLGYDNFQASVGWLNFRDRHGIALKAVCR EDSDRLMNGLGIDKINEWHAGEIIKLIADYSPDDIFNADETGVFFQLLPQHTLAAGDHCGRGKKAKQRL TALFCCNASGTEKMRPLIVGRSASPHCLKNIHSLPCDYRANQWAWMTRDLFNEWLMQVDARMKRAERR IL</p> <p>LLIDNCSAHNMLPHLERIQVGYLPSNCTAVLQPLNLGIIHTMKVLYRSHLLKQILLKLNSSEDQEEVDIK QAIDMIAAAWWSVKPSTVVKCWQKAGIVPMEFAECDTESAASEPDIAIEKLWHTVAIATCVPNEVNFQDF VTADDDLIISQDTDIIQDMVAGENTSEAGSEDEGEVSLPEQPKVTITEAISSVQKLRQFLSTCVDIPDAI FGQLNGIDEYLMKRVTQTLIDSKITDFLQTK</p> <p>TRTRPLEQKLISEEDLAANDILDYKDDDDKV</p>
Tag:	C-Myc/DDK
Predicted MW:	58.5 kDa
Concentration:	>0.05 µg/µL as determined by microplate BCA method
Purity:	> 80% as determined by SDS-PAGE and Coomassie blue staining
Buffer:	25 mM Tris-HCl, 100 mM glycine, pH 7.3, 10% glycerol
Preparation:	Recombinant protein was captured through anti-DDK affinity column followed by conventional chromatography steps.
Note:	For testing in cell culture applications, please filter before use. Note that you may experience some loss of protein during the filtration process.
Storage:	Store at -80°C.



[View online »](#)

Stability:	Stable for 12 months from the date of receipt of the product under proper storage and handling conditions. Avoid repeated freeze-thaw cycles.
RefSeq:	NP_112215
Locus ID:	81789
UniProt ID:	Q17RP2
RefSeq Size:	4001
Cytogenetics:	5q32
RefSeq ORF:	1563
Summary:	The protein encoded by this gene belongs to the tigger subfamily of the pogo superfamily of DNA-mediated transposons in humans. These proteins are related to DNA transposons found in fungi and nematodes, and more distantly to the Tc1 and mariner transposases. They are also very similar to the major mammalian centromere protein B. [provided by RefSeq, Oct 2009]
Protein Families:	Transcription Factors

Product images:



Coomassie blue staining of purified TIGD6 protein (Cat# [TP315809]). The protein was produced from HEK293T cells transfected with TIGD6 cDNA clone (Cat# [RC215809]) using MegaTran 2.0 (Cat# [TT210002]).