

## Product datasheet for **TP315809**

### **TIGD6 (NM\_030953) Human Recombinant Protein**

#### **Product data:**

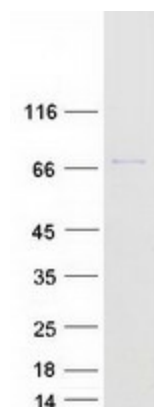
<b>Product Type:</b>	Recombinant Proteins
<b>Description:</b>	Recombinant protein of human tigger transposable element derived 6 (TIGD6), 20 µg
<b>Species:</b>	Human
<b>Expression Host:</b>	HEK293T
<b>Expression cDNA Clone or AA Sequence:</b>	>RC215809 protein sequence <b>Red</b> =Cloning site <b>Green</b> =Tags(s)
	<p>MANKGNKKRRQFSLEEKMKVVGAVDSGKRKGDVAKEFGITPSTLSTFLKDRTKFEEKVREASVGPQRKRM RSALYDDIDKAVFAWFQEIHAKNILVTGSVIRKKALNLANMLGYDNFQASVGWLNFRDRHGIALKAVCR EDSDRLMNGLGIDKINEWHAGEIIKLIADYSPDDIFNADETGVFFQLLPQHTLAAGDHCGRGKKAKQRL TALFCCNASGTEKMRPLIVGRSASPHCLKNIHSLPCDYRANQWAWMTRDLFNEWLMQVDARMKRAERR IL LLIDNCSAHNMLPHLERIQVGYLPSNCTAVLQPLNLGIIHTMKVLYRSHLLKQILLKLNSSEDQEEVDIK QAIDMIAAAWWSVKPSTVVKCWQKAGIVPMEFAECDTESAASEPDIAIEKLWHTVAIATCVPNEVNFQDF VTADDDLIISQDTDIIQDMVAGENTSEAGSEDEGEVSLPEQPKVTITEAISSVQKLRQFLSTCVDIPDAI FGQLNGIDEYLMKRVTQTLIDSKITDFLQTK</p> <p><b>TRTRPLEQKLISEEDLAANDILDYKDDDDKV</b></p>
<b>Tag:</b>	C-Myc/DDK
<b>Predicted MW:</b>	58.5 kDa
<b>Concentration:</b>	>0.05 µg/µL as determined by microplate BCA method
<b>Purity:</b>	> 80% as determined by SDS-PAGE and Coomassie blue staining
<b>Buffer:</b>	25 mM Tris-HCl, 100 mM glycine, pH 7.3, 10% glycerol
<b>Preparation:</b>	Recombinant protein was captured through anti-DDK affinity column followed by conventional chromatography steps.
<b>Note:</b>	For testing in cell culture applications, please filter before use. Note that you may experience some loss of protein during the filtration process.
<b>Storage:</b>	Store at -80°C.



[View online »](#)

<b>Stability:</b>	Stable for 12 months from the date of receipt of the product under proper storage and handling conditions. Avoid repeated freeze-thaw cycles.
<b>RefSeq:</b>	<u><a href="#">NP_112215</a></u>
<b>Locus ID:</b>	81789
<b>UniProt ID:</b>	<u><a href="#">Q17RP2</a></u>
<b>RefSeq Size:</b>	4001
<b>Cytogenetics:</b>	5q32
<b>RefSeq ORF:</b>	1563
<b>Summary:</b>	The protein encoded by this gene belongs to the tigger subfamily of the pogo superfamily of DNA-mediated transposons in humans. These proteins are related to DNA transposons found in fungi and nematodes, and more distantly to the Tc1 and mariner transposases. They are also very similar to the major mammalian centromere protein B. [provided by RefSeq, Oct 2009]
<b>Protein Families:</b>	Transcription Factors

### Product images:



Coomassie blue staining of purified TIGD6 protein (Cat# TP315809). The protein was produced from HEK293T cells transfected with TIGD6 cDNA clone (Cat# [RC215809]) using MegaTran 2.0 (Cat# [TT210002]).