

## Product datasheet for **TP315806**

### SH3GL2 (NM\_003026) Human Recombinant Protein

#### Product data:

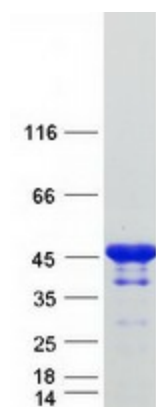
Product Type:	Recombinant Proteins
Description:	Recombinant protein of human SH3-domain GRB2-like 2 (SH3GL2), 20 µg
Species:	Human
Expression Host:	HEK293T
Expression cDNA Clone or AA Sequence:	>RC215806 representing NM_003026 <b>Red</b> =Cloning site <b>Green</b> =Tags(s)
	<p>MSVAGLKKQFHKATQKVSEKVGGAEGTKLDDDFKEMERKVDVTSRAVMEIMTKTIEYLQPNPASRAKLSM INTMSKIRGQEKGPYPQAEALLAEAMLKFGRELGDCCNFGPALGEVGEAMRELSEVKDSLIDIEVKQNF DPLQNLHDKDLREIQHHLKKLEGRRLDFDYKKKRQKIPDEELRQALEKFDESKEIAESSMFNLLEMDIE QVSQLSALVQAQLEYHKQAVQILQQVTVRLEERIRQASSQPRREYQPKPRMSLEFPTGDSTQPNGGLSHT GTPKPSGVQMDQPCCRALYDFEPENEGELGFKEDIITLTNQIDENWYEGMLHGHSGFFPINYVEILVAL PH</p> <p><b>TRTRPLEQKLISEEDLAANDILDYKDDDDKV</b></p>
Tag:	C-Myc/DDK
Predicted MW:	39.8 kDa
Concentration:	>0.05 µg/µL as determined by microplate BCA method
Purity:	> 80% as determined by SDS-PAGE and Coomassie blue staining
Buffer:	25 mM Tris-HCl, 100 mM glycine, pH 7.3, 10% glycerol
Preparation:	Recombinant protein was captured through anti-DDK affinity column followed by conventional chromatography steps.
Note:	For testing in cell culture applications, please filter before use. Note that you may experience some loss of protein during the filtration process.
Storage:	Store at -80°C.
Stability:	Stable for 12 months from the date of receipt of the product under proper storage and handling conditions. Avoid repeated freeze-thaw cycles.
RefSeq:	<a href="#">NP_003017</a>
Locus ID:	6456



[View online »](#)

UniProt ID:	<a href="#">Q99962</a> , <a href="#">Q7Z376</a>
RefSeq Size:	2540
Cytogenetics:	9p22.2
RefSeq ORF:	1056
Synonyms:	CNSA2; EEN-B1; SH3D2A; SH3P4
Summary:	Implicated in synaptic vesicle endocytosis. May recruit other proteins to membranes with high curvature. Required for BDNF-dependent dendrite outgrowth. Cooperates with SH3GL2 to mediate BDNF-NTRK2 early endocytic trafficking and signaling from early endosomes. [UniProtKB/Swiss-Prot Function]
Protein Pathways:	Endocytosis

### Product images:



Coomassie blue staining of purified SH3GL2 protein (Cat# TP315806). The protein was produced from HEK293T cells transfected with SH3GL2 cDNA clone (Cat# [RC215806]) using MegaTran 2.0 (Cat# [TT210002]).