

## Product datasheet for TP315791

### AP2B1 (NM\_001282) Human Recombinant Protein

#### Product data:

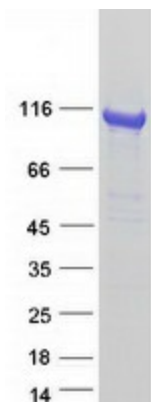
Product Type:	Recombinant Proteins
Description:	Recombinant protein of human adaptor-related protein complex 2, beta 1 subunit (AP2B1), transcript variant 2
Species:	Human
Expression Host:	HEK293T
Tag:	C-Myc/DDK
Predicted MW:	104.4 kDa
Concentration:	>50 ug/mL as determined by microplate BCA method
Purity:	> 80% as determined by SDS-PAGE and Coomassie blue staining
Buffer:	25 mM Tris.HCl, pH 7.3, 100 mM glycine, 10% glycerol
Preparation:	Recombinant protein was captured through anti-DDK affinity column followed by conventional chromatography steps.
Storage:	Store at -80°C.
Stability:	Stable for 12 months from the date of receipt of the product under proper storage and handling conditions. Avoid repeated freeze-thaw cycles.
RefSeq:	<a href="#">NP_001273</a>
Locus ID:	163
RefSeq Size:	5730
Cytogenetics:	17q12
RefSeq ORF:	2811
Synonyms:	ADTB2; AP2-BETA; AP105B; CLAPB1
Summary:	The protein encoded by this gene is one of two large chain components of the assembly protein complex 2, which serves to link clathrin to receptors in coated vesicles. The encoded protein is found on the cytoplasmic face of coated vesicles in the plasma membrane. Two transcript variants encoding different isoforms have been found for this gene. [provided by RefSeq, Jul 2008]
Protein Families:	Druggable Genome



[View online »](#)

Protein Pathways: Endocytosis, Huntington's disease

### Product images:



Coomassie blue staining of purified AP2B1 protein (Cat# TP315791). The protein was produced from HEK293T cells transfected with AP2B1 cDNA clone (Cat# [RC215791]) using MegaTran 2.0 (Cat# [TT210002]).