

Product datasheet for **TP315746L**

Myelin Basic Protein (MBP) (NM_001025081) Human Recombinant Protein

Product data:

Product Type: Recombinant Proteins

Description: Recombinant protein of human myelin basic protein (MBP), transcript variant 1, 1 mg

Species: Human

Expression Host: HEK293T

Expression cDNA Clone or AA Sequence: >RC215746 representing NM_001025081
Red=Cloning site **Green**=Tags(s)

MASQKRPSQRHGSKYLATASTMDHARHGFLPRHRDTGILDSIGRFFGGDRGAPKRGSGKVPWLKPGRSPL
PSHARSQPGLCNMYKDSHHPARTAHYGSLPQKSHGRTQDENPVVHFFKNIVTPRTPPPSQGKGRGLSLSR
FSWGAEGQRPFGYGGGRASDYKSAHKGFKGVDAQGTLSKIFKLGGRDSRSGSPMARR

TRTRPLEQKLISEEDLAANDILDYKDDDDKV

Tag: C-Myc/DDK

Predicted MW: 21.3 kDa

Concentration: >0.05 µg/µL as determined by microplate BCA method

Purity: > 80% as determined by SDS-PAGE and Coomassie blue staining

Buffer: 25 mM Tris-HCl, 100 mM glycine, pH 7.3, 10% glycerol

Preparation: Recombinant protein was captured through anti-DDK affinity column followed by conventional chromatography steps.

Note: For testing in cell culture applications, please filter before use. Note that you may experience some loss of protein during the filtration process.

Storage: Store at -80°C.

Stability: Stable for 12 months from the date of receipt of the product under proper storage and handling conditions. Avoid repeated freeze-thaw cycles.

RefSeq: [NP_001020252](#)

Locus ID: 4155

UniProt ID: [P02686](#)

RefSeq Size: 2300



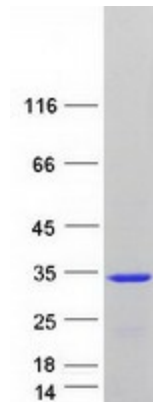
[View online »](#)

Cytogenetics: 18q23

RefSeq ORF: 591

Summary: The protein encoded by the classic MBP gene is a major constituent of the myelin sheath of oligodendrocytes and Schwann cells in the nervous system. However, MBP-related transcripts are also present in the bone marrow and the immune system. These mRNAs arise from the long MBP gene (otherwise called "Golli-MBP") that contains 3 additional exons located upstream of the classic MBP exons. Alternative splicing from the Golli and the MBP transcription start sites gives rise to 2 sets of MBP-related transcripts and gene products. The Golli mRNAs contain 3 exons unique to Golli-MBP, spliced in-frame to 1 or more MBP exons. They encode hybrid proteins that have N-terminal Golli aa sequence linked to MBP aa sequence. The second family of transcripts contain only MBP exons and produce the well characterized myelin basic proteins. This complex gene structure is conserved among species suggesting that the MBP transcription unit is an integral part of the Golli transcription unit and that this arrangement is important for the function and/or regulation of these genes. [provided by RefSeq, Jul 2008]

Product images:



Coomassie blue staining of purified MBP protein (Cat# [TP315746]). The protein was produced from HEK293T cells transfected with MBP cDNA clone (Cat# [RC215746]) using MegaTran 2.0 (Cat# [TT210002]).