

Product datasheet for TP315724

COL21A1 (NM_030820) Human Recombinant Protein

Product data:

Product Type: Recombinant Proteins
Description: Recombinant protein of human collagen, type XXI, alpha 1 (COL21A1), 20 µg
Species: Human
Expression Host: HEK293T
Expression cDNA Clone or AA Sequence: >RC215724 protein sequence
Red=Cloning site **Green**=Tags(s)

MAHYITFLCMVLVLLLQNSVLAEDGEVRSSCRTAPTDLVFILDGSYSVGPENFEIVKKWLVNITKNFDIG
 PKFIQVGWVQYSDYPVLEIPLGSYDSGEHLTAAVESILYLGNTKTGKAIQFALDYLFKSSRFLTKIAV
 VLTDGKSQDDVKDAAQAARDSKITLFAIGVGSETEDAELRAIANKPSSTYVFYVEDYIAISKIREVMKQK
 LCEESVCPTRIPVAARDERGFIDILLGLDVNKKVKKRIQLSPKKIKGYEVTSKVDLSELTSNVFPEGLPPS
 YVAVSTQRFVKKIWDLWRILTIDGRPQIAVTLNGVDKILLFTTTSVINGSQVWTFANPQVKTLFDEGWH
 QIRLLVTEQDVTLYIDDQIENKPLHPVLGILINGQTQIGKYSGKEETVQFDVQKLRIYCDPEQNNRETA
 CEIPGFNGECLNGPSDVGSTPAPCICPPGKPLQGPKGDPGLPGNPGYGPQPGQDGKPGYQGIAGTPGVP
 GSPGIQGARGLPYKGEPRDGDGKDRGLPGFPLHGMPGSKGEMGAKGDKGSPGFYGGKAKGKEKGNAG
 FPGLPGPAGEPRRHGKDGLMGSPGFKGEAGSPGAPGQDGTREGEPIGFPGNRGLMGQKGEIGPPGQQGK
 KGAPGMPGLMGSNGSPGQPGTPGSKGSKGEPGIQGMPGASGLKGEPEGATGSPGEPGYMGLPGIQGKKGDK
 GNQGEKGIQGGKGENGRQGIQGGIQQHGGAKGERGEKGEVVRGAIGSKGESGVDGLMGPAKPKGQPG
 DPGPQGPGLDGKPGREFSEQFIRQVCTDVIRAQLPVLQSGRIRNCDHCLSQHSGSPGIPGPPGPIGPEG
 PRGLPGLPRDGVPLVGVPRGVRGLKGLPGRNGEKGSGQFGYGEQGGPPGPPGPEGPPGISKEGPPG
 DPGLPGKGDHGGKPGIQGQPGPPGICDPSLCFSVIARRDPFRKGPNY

TRTRPLEQKLISEEDLAANDILDYKDDDDKV

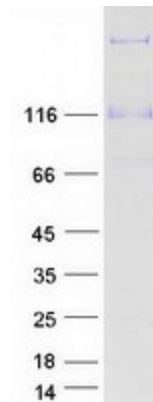
Tag: C-Myc/DDK
Predicted MW: 96.8 kDa
Concentration: >0.05 µg/µL as determined by microplate BCA method
Purity: > 80% as determined by SDS-PAGE and Coomassie blue staining
Buffer: 25 mM Tris-HCl, 100 mM glycine, pH 7.3, 10% glycerol
Preparation: Recombinant protein was captured through anti-DDK affinity column followed by conventional chromatography steps.



[View online »](#)

Note:	For testing in cell culture applications, please filter before use. Note that you may experience some loss of protein during the filtration process.
Storage:	Store at -80°C.
Stability:	Stable for 12 months from the date of receipt of the product under proper storage and handling conditions. Avoid repeated freeze-thaw cycles.
RefSeq:	NP_110447
Locus ID:	81578
UniProt ID:	Q96P44 , A0A158RFW1
RefSeq Size:	4193
Cytogenetics:	6p12.3-p11.2
RefSeq ORF:	2871
Synonyms:	COLA1L; FP633
Summary:	This gene encodes the alpha chain of type XXI collagen, a member of the FACIT (fibril-associated collagens with interrupted helices) collagen family. Type XXI collagen is localized to tissues containing type I collagen and maintains the integrity of the extracellular matrix. Alternative splicing results in multiple transcript variants. [provided by RefSeq, Jan 2016]

Product images:



Coomassie blue staining of purified COL21A1 protein (Cat# TP315724). The protein was produced from HEK293T cells transfected with COL21A1 cDNA clone (Cat# [RC215724]) using MegaTran 2.0 (Cat# [TT210002]).