

Product datasheet for TP315722L

ELMO1 (NM_001039459) Human Recombinant Protein

Product data:

Product Type:	Recombinant Proteins
Description:	Recombinant protein of human engulfment and cell motility 1 (ELMO1), transcript variant 3, 1 mg
Species:	Human
Expression Host:	HEK293T
Expression cDNA Clone or AA Sequence:	>RC215722 protein sequence Red=Cloning site Green=Tags(s)

MPPPADIVKVAIEWPGAYPKLMEIDQKKPLSAIIEKVCWGWSLANHEYFALQHADSSNFYITEKNRNEIK
NGTILRLTTSPAQNAQQLHERIQSSMDAKLEALKDLASLSRDVTFQEFINLDGISLLTQMVESGTERY
QKLQKIMKPCFGDMLSFTLTAFVELMDHGIVSWDTFSVAFIKKIASFVNKSAIDISILQRSLAILESMVL
NSHDLYQKVAQEITIGQLIPHLQGSQEIQTYTIAVINALFLKAPDERRQEMANILAQKQLRSIILTHVI
RAQRAINNEMAHQLYLQVLTFNLLEDMMTKMDPQDQAQRDIIFELRRIAFDAESEPNSSSGSMEKRKS
MYTRDYKKLGFHVNPAAMDFQTTPGMLALDNMLYFAKHHQDAYIRIVLENSREDKHECPFGRSSIEL
TKMLCEILKVGELPSETCNDHFPMFFTHDRSFEEFFCICQLLNKTKWEMRATSEDFNKVMQVQVEQVMR
ALTTKPSLDQFKSKLQNLQSYTEILKIRQSERMNQEDFQSRPILELKEKIQPEILELIKQQLNRLVEGT
CFRKLNARRRQDKFWYCRSPNHKVLHYGDLEESPQGEVPHDSLQDKLPVADIKAVTGDKDCPHMKEKGA
LKQNKVLELAFSILYDSNCQLNFIAPDKHEYCIWTDGLNALLGKDMMSDLTRNDLDTLLSMEIKLRLLD
LENIQIPDAPPIPEPSNYDFVYDCN

TRTRPLEQKLISEEDLAANDILDYKDDDDKV

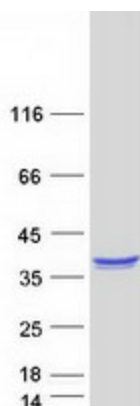
Tag:	C-Myc/DDK
Predicted MW:	28.6 kDa
Concentration:	>0.05 µg/µL as determined by microplate BCA method
Purity:	> 80% as determined by SDS-PAGE and Coomassie blue staining
Buffer:	25 mM Tris-HCl, 100 mM glycine, pH 7.3, 10% glycerol
Preparation:	Recombinant protein was captured through anti-DDK affinity column followed by conventional chromatography steps.
Note:	For testing in cell culture applications, please filter before use. Note that you may experience some loss of protein during the filtration process.



[View online »](#)

Storage:	Store at -80°C.
Stability:	Stable for 12 months from the date of receipt of the product under proper storage and handling conditions. Avoid repeated freeze-thaw cycles.
RefSeq:	NP_001034548
Locus ID:	9844
UniProt ID:	Q92556
RefSeq Size:	3590
Cytogenetics:	7p14.2-p14.1
RefSeq ORF:	2181
Synonyms:	CED-12; CED12; ELMO-1
Summary:	This gene encodes a member of the engulfment and cell motility protein family. These proteins interact with dedicator of cytokinesis proteins to promote phagocytosis and cell migration. Increased expression of this gene and dedicator of cytokinesis 1 may promote glioma cell invasion, and single nucleotide polymorphisms in this gene may be associated with diabetic nephropathy. Alternative splicing results in multiple transcript variants. [provided by RefSeq, Aug 2013]
Protein Pathways:	Chemokine signaling pathway

Product images:



Coomassie blue staining of purified ELMO1 protein (Cat# [TP315722]). The protein was produced from HEK293T cells transfected with ELMO1 cDNA clone (Cat# [RC215722]) using MegaTran 2.0 (Cat# [TT210002]).