

Product datasheet for **TP315701M**

SH3KBP1 (NM_001024666) Human Recombinant Protein

Product data:

Product Type:	Recombinant Proteins
Description:	Recombinant protein of human SH3-domain kinase binding protein 1 (SH3KBP1), transcript variant 2, 100 µg
Species:	Human
Expression Host:	HEK293T
Expression cDNA Clone or AA Sequence:	>RC215701 representing NM_001024666 Red =Cloning site Green =Tags(s)

MEVSAAKAPSAADLSEIEIKKEMKKDPLTNKAPEKPLHEVPSGNSLLSSETILRTNKRGERRRRRRCQVAF
SYLPQNDDELELKVGDIIEVVGEVEEGWWEGVLNGKTGMFPSNFIKELSGESDELGISQDEQLSKSSLRE
TTGSESDGGSSSTKSEGANGTVATAAIQPKKVKGVFGDIFKDKPIKLRPRSIEVENDFLPVEKTIGKK
LPATTATPDSSKTEMDSRTKSKDYCKVIFPYEAQNDELTIKEGDIVTLINKDCIDVGWWEGLNRRGV
FPDNFVKLLPPDFEKEGNRPKPPPPSAPVIKQGAGTTERKHEIKKIPPERPEMLPNRTEEKERP
LDLQKPSVPAIPPKPRPPKTNSLSRPGALPPRRPERVGPLTHTRGDSPKIDLAGSSLSGILDKDLSDR
SNDIDLEGFDSVVSSTEKLSHPPTSRPKATGRRPPSQSLTSSSLSPDIFDSPSPEEDKEEHISLAHRGV
DASKKTSKTVTISQVSDNKASLPPKPGTMAAGGGGPAPLSSAAPSPLSSSLGTAGHRANSPSLFGTEGPK
KMEPAASSQA AVEELRTQVRELSIIETMKDQKREIKQLLELDEEKIRLRLQMEVNDIKKALQSK

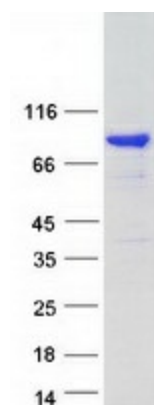
TRRLEQKLISEEDLAANDILDYKDDDDKV

Tag:	C-Myc/DDK
Predicted MW:	68.4 kDa
Concentration:	>0.05 µg/µL as determined by microplate BCA method
Purity:	> 80% as determined by SDS-PAGE and Coomassie blue staining
Buffer:	25 mM Tris-HCl, 100 mM glycine, pH 7.3, 10% glycerol
Preparation:	Recombinant protein was captured through anti-DDK affinity column followed by conventional chromatography steps.
Note:	For testing in cell culture applications, please filter before use. Note that you may experience some loss of protein during the filtration process.
Storage:	Store at -80°C.



[View online »](#)

Stability:	Stable for 12 months from the date of receipt of the product under proper storage and handling conditions. Avoid repeated freeze-thaw cycles.
RefSeq:	NP_001019837
Locus ID:	30011
UniProt ID:	Q96B97
RefSeq Size:	2689
Cytogenetics:	Xp22.12
RefSeq ORF:	1884
Synonyms:	AGMX2; CD2BP3; CIN85; GIG10; HSB-1; HSB1; IMD61; MIG18
Summary:	This gene encodes an adapter protein that contains one or more N-terminal Src homology domains, a proline rich region and a C-terminal coiled-coil domain. The encoded protein facilitates protein-protein interactions and has been implicated in numerous cellular processes including apoptosis, cytoskeletal rearrangement, cell adhesion and in the regulation of clathrin-dependent endocytosis. Alternate splicing results in multiple transcript variants encoding distinct isoforms. [provided by RefSeq, Jul 2017]
Protein Families:	Druggable Genome
Protein Pathways:	Endocytosis

Product images:

Coomassie blue staining of purified SH3KBP1 protein (Cat# [TP315701]). The protein was produced from HEK293T cells transfected with SH3KBP1 cDNA clone (Cat# [RC215701]) using MegaTran 2.0 (Cat# [TT210002]).