

## Product datasheet for **TP315701L**

### SH3KBP1 (NM\_001024666) Human Recombinant Protein

#### Product data:

|                                       |  |
|---------------------------------------|--|
| Product Type:                         | Recombinant Proteins   |
| Description:                          | Recombinant protein of human SH3-domain kinase binding protein 1 (SH3KBP1), transcript variant 2, 1 mg |
| Species:                              | Human  |
| Expression Host:                      | HEK293T  |
| Expression cDNA Clone or AA Sequence: | >RC215701 representing NM_001024666<br><b>Red</b> =Cloning site <b>Green</b> =Tags(s)                  |

MEVSAAKAPSAADLSEIEIKKEMKKDPLTNKAPEKPLHEVPSGNSLLSSETILRTNKRGERRRRRRCQVAF  
SYLPQNDDELELKVGDIIIEVVGEEVWEGVLNGKTMFPSNFIKELSGESDELGISQDEQLSKSSLRE  
TTGSESDGGSSSTKSEGANGTVATAAIQPKKVKGVGFGDIFKDKPIKLRPRSIEVENDFLPVEKTIGKK  
LPATTATPDSSKTEMDSRTKSKDYCKVIFPYEAQNDELTIKEGDIVTLINKDCIDVGWWEDELNGRRGV  
FPDNFVKLLPPDFEKEGNRPKPPPPSAPVIKQGAGTTERKHEIKKIPPERPEMLPNRTEEKERP  
LDLQKPSVPAIPPKPRPPKTNSLSRPGALPPRRPERVGPLTHTRGDSPKIDLAGSSLSGILDKDLSDR  
SNDIDLEGFDSVVSSTEKLSHPPTSRPKATGRRPPSQSLTSSSLSPDIFDSPSPEEDKEEHISLAHRGV  
DASKKTSKTVTISQVSDNKASLPPKPGTMAAGGGGPAPLSSAAPSPLSSSLGTAGHRANSPSLFGTEGPK  
KMEPAASSQA AVEELRTQVRELSIIETMKDQKREIKQLLESELDEEKIRLRLQMEVNDIKKALQSK

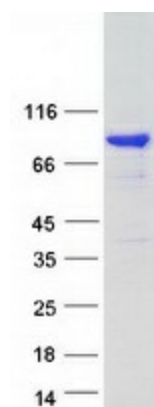
**TRRLEQKLISEEDLAANDILDYKDDDDKV**

|                |  |
|----------------|--|
| Tag:           | C-Myc/DDK  |
| Predicted MW:  | 68.4 kDa   |
| Concentration: | >0.05 µg/µL as determined by microplate BCA method   |
| Purity:        | > 80% as determined by SDS-PAGE and Coomassie blue staining  |
| Buffer:        | 25 mM Tris-HCl, 100 mM glycine, pH 7.3, 10% glycerol   |
| Preparation:   | Recombinant protein was captured through anti-DDK affinity column followed by conventional chromatography steps.                                     |
| Note:          | For testing in cell culture applications, please filter before use. Note that you may experience some loss of protein during the filtration process. |
| Storage:       | Store at -80°C.  |



[View online »](#)

|                          |  |
|--------------------------|--|
| <b>Stability:</b>        | Stable for 12 months from the date of receipt of the product under proper storage and handling conditions. Avoid repeated freeze-thaw cycles.  |
| <b>RefSeq:</b>           | <a href="#">NP_001019837</a>   |
| <b>Locus ID:</b>         | 30011  |
| <b>UniProt ID:</b>       | <a href="#">Q96B97</a>   |
| <b>RefSeq Size:</b>      | 2689   |
| <b>Cytogenetics:</b>     | Xp22.12  |
| <b>RefSeq ORF:</b>       | 1884   |
| <b>Synonyms:</b>         | AGMX2; CD2BP3; CIN85; GIG10; HSB-1; HSB1; IMD61; MIG18   |
| <b>Summary:</b>          | This gene encodes an adapter protein that contains one or more N-terminal Src homology domains, a proline rich region and a C-terminal coiled-coil domain. The encoded protein facilitates protein-protein interactions and has been implicated in numerous cellular processes including apoptosis, cytoskeletal rearrangement, cell adhesion and in the regulation of clathrin-dependent endocytosis. Alternate splicing results in multiple transcript variants encoding distinct isoforms. [provided by RefSeq, Jul 2017] |
| <b>Protein Families:</b> | Druggable Genome   |
| <b>Protein Pathways:</b> | Endocytosis  |

**Product images:**

Coomassie blue staining of purified SH3KBP1 protein (Cat# [TP315701]). The protein was produced from HEK293T cells transfected with SH3KBP1 cDNA clone (Cat# [RC215701]) using MegaTran 2.0 (Cat# [TT210002]).