

## Product datasheet for TP315669M

### Reticulon 1 (RTN1) (NM\_206852) Human Recombinant Protein

#### Product data:

Product Type:	Recombinant Proteins
Description:	Recombinant protein of human reticulon 1 (RTN1), transcript variant 3, 100 µg
Species:	Human
Expression Host:	HEK293T
Expression cDNA Clone or AA Sequence:	>RC215669 representing NM_206852 Red=Cloning site Green=Tags(s)
	 MQATADSTKMDCVWSNWKSQAIDLLYWRDIKQTGIVFGSFLLLLSLTQFSVSVWAYLALAALSATISF RIYKSVLQAVQKTDEGHHPFKAYLELEITLSQEIQKYTDCLQFYVNSTLKELRRLFLVQDLVDSLKFAVL MWLLTYVGALFNGLTLLMAMVSMFTLPVVYVKHQAQIDQYLGLVRTHINAVVAKIQAKIPGAKRHAE  TRTRPLEQKLISEEDLAANDILDYKDDDDKV
Tag:	C-Myc/DDK
Predicted MW:	23.4 kDa
Concentration:	>0.05 µg/µL as determined by microplate BCA method
Purity:	> 80% as determined by SDS-PAGE and Coomassie blue staining
Buffer:	25 mM Tris-HCl, 100 mM glycine, pH 7.3, 10% glycerol
Preparation:	Recombinant protein was captured through anti-DDK affinity column followed by conventional chromatography steps.
Note:	For testing in cell culture applications, please filter before use. Note that you may experience some loss of protein during the filtration process.
Storage:	Store at -80°C.
Stability:	Stable for 12 months from the date of receipt of the product under proper storage and handling conditions. Avoid repeated freeze-thaw cycles.
RefSeq:	<a href="#">NP_996734</a>
Locus ID:	6252
UniProt ID:	<a href="#">Q16799</a> , <a href="#">A8K3B9</a>
RefSeq Size:	1710



[View online »](#)

Cytogenetics: 14q23.1

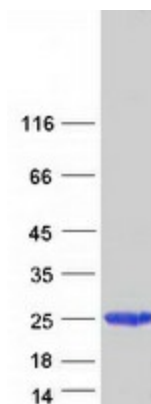
RefSeq ORF: 624

Synonyms: NSP

**Summary:** This gene belongs to the family of reticulon encoding genes. Reticulons are associated with the endoplasmic reticulum, and are involved in neuroendocrine secretion or in membrane trafficking in neuroendocrine cells. This gene is considered to be a specific marker for neurological diseases and cancer, and is a potential molecular target for therapy. Alternative splicing results in multiple transcript variants. [provided by RefSeq, Jul 2011]

**Protein Families:** Transmembrane

### Product images:



Coomassie blue staining of purified RTN1 protein (Cat# [TP315669]). The protein was produced from HEK293T cells transfected with RTN1 cDNA clone (Cat# [RC215669]) using MegaTran 2.0 (Cat# [TT210002]).