

Product datasheet for **TP315660L**

OSBPL2 (NM_014835) Human Recombinant Protein

Product data:

| | |
|---------------------------------------|--|
| Product Type: | Recombinant Proteins |
| Description: | Recombinant protein of human oxysterol binding protein-like 2 (OSBPL2), transcript variant 1, 1 mg |
| Species: | Human |
| Expression Host: | HEK293T |
| Expression cDNA Clone or AA Sequence: | >RC215660 representing NM_014835 Red =Cloning site Green =Tags(s) |

MNGEEFFDAVTEANQKVTGMIDLDTSKNNRIGKTGERPSQENGIQKHRTSLPAPMFSRSDFSVWTILKK
CVGLELSKITMPIAFNEPLSFLQRITEYMEHVLIHRASCQPQLERMQSVAFAVASQWERTGKPF
NPLLGETYELIREDLGFRFISEQVSHHPPISAFHSEGLNHDFLFHGSYIPKLFWGWKSVEAEPRTITLE
LLKHNEAYTWTNPTCCVHNVIIGKLWIEQYGTVEILNHRTHGKCVLHFKPCGLFGKELHKVEGHIQDKNK
KKLFMIYGKWTECLWGIDPVSYESFKKQERRGDHLRKAKLDEDSGKADSDVADDVPVAQETVQVIPGSKL
LWRINTRPPNSAQMYNFTSFTVSLNELETGMEKTLPPDTCRLRPDIRGMENGNMDLASQEKERLEEKQRE
ARRERAKEEAEWQTRWFYPGNNPYTGTPDWLYAGDYFERNFSDCPDIY

TRTRPLEQKLISEEDLAANDILDYKDDDDKV

| | |
|----------------|--|
| Tag: | C-Myc/DDK |
| Predicted MW: | 53.8 kDa |
| Concentration: | >0.05 µg/µL as determined by microplate BCA method |
| Purity: | > 80% as determined by SDS-PAGE and Coomassie blue staining |
| Buffer: | 25 mM Tris-HCl, 100 mM glycine, pH 7.3, 10% glycerol |
| Preparation: | Recombinant protein was captured through anti-DDK affinity column followed by conventional chromatography steps. |
| Note: | For testing in cell culture applications, please filter before use. Note that you may experience some loss of protein during the filtration process. |
| Storage: | Store at -80°C. |
| Stability: | Stable for 12 months from the date of receipt of the product under proper storage and handling conditions. Avoid repeated freeze-thaw cycles. |

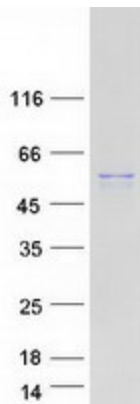


[View online >](#)

| | |
|---------------|-----------------------------|
| RefSeq: | NP_055650 |
| Locus ID: | 9885 |
| UniProt ID: | Q9H1P3 |
| RefSeq Size: | 3935 |
| Cytogenetics: | 20q13.33 |
| RefSeq ORF: | 1404 |
| Synonyms: | DFNA67; DNFA67; ORP-2; ORP2 |

Summary: This gene encodes a member of the oxysterol-binding protein (OSBP) family, a group of intracellular lipid receptors. Most members contain an N-terminal pleckstrin homology domain and a highly conserved C-terminal OSBP-like sterol-binding domain, although the encoded protein contains only the sterol-binding domain. In vitro studies have shown that the encoded protein can bind strongly to phosphatic acid and weakly to phosphatidylinositol 3-phosphate, but cannot bind to 25-hydroxycholesterol. The protein associates with the Golgi apparatus. Transcript variants encoding different isoforms have been described. [provided by RefSeq, Sep 2014]

Product images:



Coomassie blue staining of purified OSBPL2 protein (Cat# [TP315660]). The protein was produced from HEK293T cells transfected with OSBPL2 cDNA clone (Cat# [RC215660]) using MegaTran 2.0 (Cat# [TT210002]).