

## Product datasheet for **TP315649L**

### **SUNC1 (SUN3) (NM\_001030019) Human Recombinant Protein**

#### **Product data:**

<b>Product Type:</b>	Recombinant Proteins
<b>Description:</b>	Recombinant protein of human Sad1 and UNC84 domain containing 1 (SUNC1), transcript variant 1, 1 mg
<b>Species:</b>	Human
<b>Expression Host:</b>	HEK293T
<b>Expression cDNA Clone or AA Sequence:</b>	>RC215649 representing NM_001030019 <b>Red</b> =Cloning site <b>Green</b> =Tags(s)
	 MSGGTKARRAAMFFRRCSEDASGSASGNALLSEDENPDANGVTRSWKIILSTMLTLTFLLVGLLNHQWLK ETDVPQKSRQLYAIIEYGSRLYKYQARLRMPKEQLELLKKESQNLNFRQILFLIEQIDVLKALLRDM KDGMDNNHNWNTGDPVEDPDHTEEVSNLVNYVLKLRDQVEMADYALKSAGASIIIEAGTSESYKNNKA KLYWHGIGFLNHEMPPDIILQPDVYPGKCWAFPGSQGHTLIKLATKIIPAVTMEHISEKVSPSGNISSA PKFESVYGITKKCEGEEIFLGQFIYNKTGTTVQTFELQHAVSEYLLCVKLNIFSNWGHGPKYTCLYRFRVH GTPGKHI  <b>TRTRPLEQKLISEEDLAANDILDYKDDDDKV</b>
<b>Tag:</b>	C-Myc/DDK
<b>Predicted MW:</b>	40.3 kDa
<b>Concentration:</b>	>0.05 µg/µL as determined by microplate BCA method
<b>Purity:</b>	> 80% as determined by SDS-PAGE and Coomassie blue staining
<b>Buffer:</b>	25 mM Tris-HCl, 100 mM glycine, pH 7.3, 10% glycerol
<b>Preparation:</b>	Recombinant protein was captured through anti-DDK affinity column followed by conventional chromatography steps.
<b>Note:</b>	For testing in cell culture applications, please filter before use. Note that you may experience some loss of protein during the filtration process.
<b>Storage:</b>	Store at -80°C.
<b>Stability:</b>	Stable for 12 months from the date of receipt of the product under proper storage and handling conditions. Avoid repeated freeze-thaw cycles.
<b>RefSeq:</b>	<a href="#">NP_001025190</a>



[View online »](#)

Locus ID: 256979

UniProt ID: [Q8TAQ9](#)

RefSeq Size: 1452

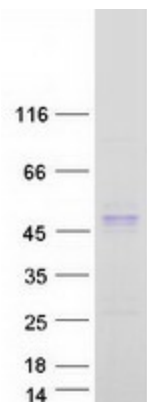
Cytogenetics: 7p12.3

RefSeq ORF: 1071

Synonyms: SUNC1

**Summary:** As a probable component of the LINC (LInker of Nucleoskeleton and Cytoskeleton) complex, involved in the connection between the nuclear lamina and the cytoskeleton. The nucleocytoplasmic interactions established by the LINC complex play an important role in the transmission of mechanical forces across the nuclear envelope and in nuclear movement and positioning. May be involved in nuclear remodeling during sperm head formation in spermatogenesis. A probable SUN3:SYNE1 LINC complex may tether spermatid nuclei to posterior cytoskeletal structures such as the manchette.[UniProtKB/Swiss-Prot Function]

### Product images:



Coomassie blue staining of purified SUN3 protein (Cat# [TP315649]). The protein was produced from HEK293T cells transfected with SUN3 cDNA clone (Cat# [RC215649]) using MegaTran 2.0 (Cat# [TT210002]).