

## Product datasheet for **TP315647L**

### **NAT8B (NM\_016347) Human Recombinant Protein**

#### **Product data:**

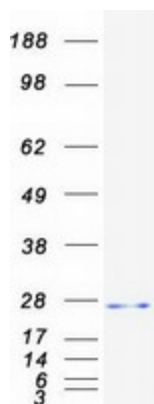
Product Type:	Recombinant Proteins
Description:	Recombinant protein of human N-acetyltransferase 8B (GCN5-related, putative, gene/pseudogene) (NAT8B), 1 mg
Species:	Human
Expression Host:	HEK293T
Expression cDNA Clone or AA Sequence:	>RC215647 representing NM_016347 <b>Red</b> =Cloning site <b>Green</b> =Tags(s)  MAPYHIRKYQESDRKSVGLLSGGMAEHAPATFRRLCLKPRTLILLGGALALLVSGSWILALVFSLSL LPALWFLAKKPWTRYVDIALRTDMSDITKSYLSECGSCFWVAESEKVVGTGALPVDDPTLREKRLQLF HLSVDNEHRGQGIKALVRTVLQFARDQGYSEVLDTSNIQLSAMGLYQSLGFKKTGQSFFHWARLVDL HTVHFIYHLPSAQAGRL  <b>TRTRPLEQKLISEEDLAANDILDYKDDDDKV</b>
Tag:	C-Myc/DDK
Predicted MW:	25.3 kDa
Concentration:	>0.05 µg/µL as determined by microplate BCA method
Purity:	> 80% as determined by SDS-PAGE and Coomassie blue staining
Buffer:	25 mM Tris-HCl, 100 mM glycine, pH 7.3, 10% glycerol
Preparation:	Recombinant protein was captured through anti-DDK affinity column followed by conventional chromatography steps.
Note:	For testing in cell culture applications, please filter before use. Note that you may experience some loss of protein during the filtration process.
Storage:	Store at -80°C.
Stability:	Stable for 12 months from the date of receipt of the product under proper storage and handling conditions. Avoid repeated freeze-thaw cycles.
RefSeq:	<u><a href="#">NP_057431</a></u>
Locus ID:	51471



[View online »](#)

UniProt ID:	<u>Q9UHF3</u>
RefSeq Size:	845
Cytogenetics:	2p13.1
RefSeq ORF:	681
Synonyms:	CML2; Hcml2; NAT8BP
Summary:	<p>The protein encoded by this gene is highly similar to the N-acetyltransferase 8 (NAT8) gene product, which is a kidney and liver protein with homology to bacterial acetyltransferases involved in drug resistance. This gene is localized on chromosome 2 in the vicinity of the NAT8 gene and may represent a pseudogene of NAT8. This gene contains two polymorphic nonsense mutations that disrupt the active site of the protein. The full-length product of this gene contains a complete acetyltransferase domain and is identical in length to NAT8. [provided by RefSeq, Jul 2008]</p>

### Product images:



Coomassie blue staining of purified NAT8B protein (Cat# [TP315647]). The protein was produced from HEK293T cells transfected with NAT8B cDNA clone (Cat# [RC215647]) using MegaTran 2.0 (Cat# [TT210002]).