

Product datasheet for **TP315647**

NAT8B (NM_016347) Human Recombinant Protein

Product data:

Product Type: Recombinant Proteins

Description: Recombinant protein of human N-acetyltransferase 8B (GCN5-related, putative, gene/pseudogene) (NAT8B), 20 µg

Species: Human

Expression Host: HEK293T

Expression cDNA Clone or AA Sequence: >RC215647 representing NM_016347
Red=Cloning site **Green**=Tags(s)

MAPYHIRKYQESDRKSWGLLSGGMAEHAPATFRLLKLPRTLILLGGALALLVSGSWILALVFSLSL
LPALWFLAKKPWTRYVDIALRTDMSDITKSYLSECGSCFWVAESEEKVVGTGALPVDPTLREKRLQLF
HLSVDNEHRGQGIKALVRTVLQFARDQGYSEVLDTSNIQLSAMGLYQSLGFKKTQSFFHVWARLVDL
HTVHFIYHLPQAQAGRL

TRTRPLEQKLISEEDLAANDILDYKDDDDKV

Tag: C-Myc/DDK

Predicted MW: 25.3 kDa

Concentration: >0.05 µg/µL as determined by microplate BCA method

Purity: > 80% as determined by SDS-PAGE and Coomassie blue staining

Buffer: 25 mM Tris-HCl, 100 mM glycine, pH 7.3, 10% glycerol

Preparation: Recombinant protein was captured through anti-DDK affinity column followed by conventional chromatography steps.

Note: For testing in cell culture applications, please filter before use. Note that you may experience some loss of protein during the filtration process.

Storage: Store at -80°C.

Stability: Stable for 12 months from the date of receipt of the product under proper storage and handling conditions. Avoid repeated freeze-thaw cycles.

RefSeq: [NP_057431](#)

Locus ID: 51471

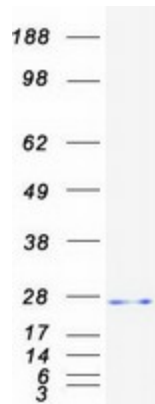


[View online »](#)

UniProt ID: [Q9UHF3](#)
RefSeq Size: 845
Cytogenetics: 2p13.1
RefSeq ORF: 681
Synonyms: CML2; Hcml2; NAT8BP

Summary: The protein encoded by this gene is highly similar to the N-acetyltransferase 8 (NAT8) gene product, which is a kidney and liver protein with homology to bacterial acetyltransferases involved in drug resistance. This gene is localized on chromosome 2 in the vicinity of the NAT8 gene and may represent a pseudogene of NAT8. This gene contains two polymorphic nonsense mutations that disrupt the active site of the protein. The full-length product of this gene contains a complete acetyltransferase domain and is identical in length to NAT8. [provided by RefSeq, Jul 2008]

Product images:



Coomassie blue staining of purified NAT8B protein (Cat# TP315647). The protein was produced from HEK293T cells transfected with NAT8B cDNA clone (Cat# [RC215647]) using MegaTran 2.0 (Cat# [TT210002]).