

Product datasheet for **TP315628L**

EDA (NM_001005610) Human Recombinant Protein

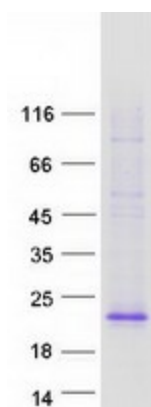
Product data:

Product Type:	Recombinant Proteins
Description:	Recombinant protein of human ectodysplasin A (EDA), transcript variant 3, 1 mg
Species:	Human
Expression Host:	HEK293T
Expression cDNA Clone or AA Sequence:	>RC215628 representing NM_001005610 Red =Cloning site Green =Tags(s)
	 MGYPEVERRELLPAAAPRERGSQGC GCGGAPARAGEGNSCLLFLGFFGLSLALHLLTLCCYLELRSELRR ERGAESRLGGSGTPGTSGTLSSLGGLDPDSPITSHLGQPSPKQQPLEPGEAALHSDSQDGHQMALLNFFF PDEKPYSEESRRVRRNKRSKSNEGADGKSTQLILYHF TRTRPLEQKLISEEDLAANDILDYKDDDDKV
Tag:	C-Myc/DDK
Predicted MW:	19 kDa
Concentration:	>0.05 µg/µL as determined by microplate BCA method
Purity:	> 80% as determined by SDS-PAGE and Coomassie blue staining
Buffer:	25 mM Tris-HCl, 100 mM glycine, pH 7.3, 10% glycerol
Preparation:	Recombinant protein was captured through anti-DDK affinity column followed by conventional chromatography steps.
Note:	For testing in cell culture applications, please filter before use. Note that you may experience some loss of protein during the filtration process.
Storage:	Store at -80°C.
Stability:	Stable for 12 months from the date of receipt of the product under proper storage and handling conditions. Avoid repeated freeze-thaw cycles.
RefSeq:	<u>NP_001005610</u>
Locus ID:	1896
UniProt ID:	<u>Q92838</u>
RefSeq Size:	1089



[View online »](#)

Cytogenetics:	Xq13.1
RefSeq ORF:	534
Synonyms:	ECTD1; ED1; ED1-A1; ED1-A2; EDA-A1; EDA-A2; EDA1; EDA2; HED; HED1; ODT1; STHAGX1; TNLG7C; XHED; XLHED
Summary:	The protein encoded by this gene is a type II membrane protein that can be cleaved by furin to produce a secreted form. The encoded protein, which belongs to the tumor necrosis factor family, acts as a homotrimer and may be involved in cell-cell signaling during the development of ectodermal organs. Defects in this gene are a cause of ectodermal dysplasia, anhidrotic, which is also known as X-linked hypohidrotic ectodermal dysplasia. Several transcript variants encoding many different isoforms have been found for this gene. [provided by RefSeq, Jul 2008]
Protein Families:	Druggable Genome, Secreted Protein, Transmembrane
Protein Pathways:	Cytokine-cytokine receptor interaction
Product images:	



Coomassie blue staining of purified EDA protein (Cat# [TP315628]). The protein was produced from HEK293T cells transfected with EDA cDNA clone (Cat# [RC215628]) using MegaTran 2.0 (Cat# [TT210002]).