

Product datasheet for **TP315612M**

AMZ1 (NM_133463) Human Recombinant Protein

Product data:

Product Type: Recombinant Proteins

Description: Recombinant protein of human archaeysin family metallopeptidase 1 (AMZ1), 100 µg

Species: Human

Expression Host: HEK293T

Expression cDNA Clone or AA Sequence: >RC215612 representing NM_133463
Red=Cloning site **Green**=Tags(s)

MLQCRPAQEFSFGPRALKDALVSTDAALQQLYVSAFSPAERLFLAEAYNPQRTLCTLLIRTGFDWLLSR
PEAPEDFQTFHASLQHRKPRLARKHIYLPIDLSEEPVGSSLLHQLCSCTEAFFLGLRVKCLPSVAAASI
RCSSRPSRDSRDLQLHTDGILSFLKNNKPGDALCVLGLTSLDLYPHEAWSFTFSKFLPGHEVGVCSEFARF
SGEFPKSGPSAPDLALVEAAADGPEAPLQDRGWALCFALGMVQCCKVTCHLCHLLGLGNCRWLRCLM
Q
GALSLEALRRPLDLCPICLRKLQHVLFRLIERYQRLYTWTQAVGTWPSQEAGEPSVWEDTPPASADS
GMCCESDSEPGTSVSEPLTPDAGSHTFASGPEEGLSYLAASEAPLPPGGPAEAIKEHERWLAMCIQALQR
EVAEEDLVQVDRAVDALDRWEMFTGQLPATRQDPPSSRDSVGLRKVLGDKFSSLRRLSARKLARAESAP
RPWDGEES

TRTRPLEQKLISEEDLAANDILDYKDDDDKV

Tag: C-Myc/DDK

Predicted MW: 54.7 kDa

Concentration: >0.05 µg/µL as determined by microplate BCA method

Purity: > 80% as determined by SDS-PAGE and Coomassie blue staining

Buffer: 25 mM Tris-HCl, 100 mM glycine, pH 7.3, 10% glycerol

Preparation: Recombinant protein was captured through anti-DDK affinity column followed by conventional chromatography steps.

Note: For testing in cell culture applications, please filter before use. Note that you may experience some loss of protein during the filtration process.

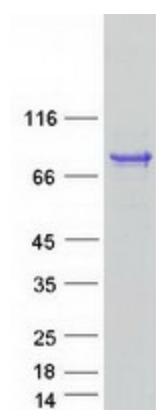
Storage: Store at -80°C.



[View online »](#)

Stability:	Stable for 12 months from the date of receipt of the product under proper storage and handling conditions. Avoid repeated freeze-thaw cycles.
RefSeq:	<u>NP_597720</u>
Locus ID:	155185
UniProt ID:	<u>Q400G9</u>
RefSeq Size:	4415
Cytogenetics:	7p22.3
RefSeq ORF:	1494
Summary:	Zinc metalloprotease. Exhibits aminopeptidase activity against neurogranin in vitro. Does not hydrolyze angiotensin-2.[UniProtKB/Swiss-Prot Function]

Product images:



Coomassie blue staining of purified AMZ1 protein (Cat# [TP315612]). The protein was produced from HEK293T cells transfected with AMZ1 cDNA clone (Cat# [RC215612]) using MegaTran 2.0 (Cat# [TT210002]).