

Product datasheet for **TP315576**

IFI27L1 (NM_145249) Human Recombinant Protein

Product data:

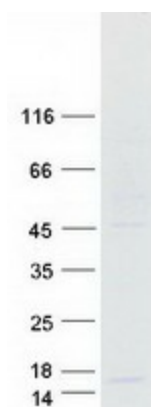
Product Type:	Recombinant Proteins
Description:	Recombinant protein of human interferon, alpha-inducible protein 27-like 1 (IFI27L1), transcript variant 1, 20 µg
Species:	Human
Expression Host:	HEK293T
Expression cDNA Clone or AA Sequence:	>RC215576 protein sequence Red =Cloning site Green =Tags(s)
	MGKESGWDSGRAAVAAVGGVAVGTVLVALSAMGFTSVGIAASSIAAKMMSTAAIANGGGVAAGSLVAI LQSVGAAGLSVTSKVIIGGFAGTALGAWLGSPSS
	TR TRPLEQKLISEEDLAANDILDYKDDDDKV
Tag:	C-Myc/DDK
Predicted MW:	9.4 kDa
Concentration:	>0.05 µg/µL as determined by microplate BCA method
Purity:	> 80% as determined by SDS-PAGE and Coomassie blue staining
Buffer:	25 mM Tris-HCl, 100 mM glycine, pH 7.3, 10% glycerol
Preparation:	Recombinant protein was captured through anti-DDK affinity column followed by conventional chromatography steps.
Note:	For testing in cell culture applications, please filter before use. Note that you may experience some loss of protein during the filtration process.
Storage:	Store at -80°C.
Stability:	Stable for 12 months from the date of receipt of the product under proper storage and handling conditions. Avoid repeated freeze-thaw cycles.
RefSeq:	NP_660292
Locus ID:	122509
UniProt ID:	Q96BM0
RefSeq Size:	732



[View online »](#)

Cytogenetics:	14q32.12
RefSeq ORF:	312
Synonyms:	FAM14B; ISG12C
Summary:	Plays a role in the apoptotic process and has a pro-apoptotic activity.[UniProtKB/Swiss-Prot Function]
Protein Families:	Transmembrane

Product images:



Coomassie blue staining of purified IFI27L1 protein (Cat# TP315576). The protein was produced from HEK293T cells transfected with IFI27L1 cDNA clone (Cat# [RC215576]) using MegaTran 2.0 (Cat# [TT210002]).