

Product datasheet for **TP315551**

ZPLD1 (NM_175056) Human Recombinant Protein

Product data:

Product Type:	Recombinant Proteins
Description:	Recombinant protein of human zona pellucida-like domain containing 1 (ZPLD1), 20 µg
Species:	Human
Expression Host:	HEK293T
Expression cDNA Clone or AA Sequence:	>RC215551 representing NM_175056 Red =Cloning site Green =Tags(s)
	<p>MMLRFSMCRGNDEGFAMEQIWLLLLLIRVLPGSAQFNGYNC DANLHSRFP AERDISVYCGVQAITMKIN FCTVLFSGYSETDLALNGRHGDSHCRGFINNNTFPAWVIFIINLSTLEGCGNNLVSTIPGVSAYGNATS VQVGNISGYIDTPDPPTIISYLPGLLYKFSCSYPLEYLVNNTQLASSAAISVRENNGTFVSTLNLLLYN DSTYNQQLIIPSIGLPLKTKVFAAVQATNLDGRWNVLMDYCYTTPSGNPND DIRYDLFLSCDKDPQTTVI ENGRSQRGRFSFEVFRVKHKNQKMSTVFLHCVTKLCRADDPCFLMPICSHRERRDAGRRTTWSPOSSSG SAVLSAGPIITRSDPTNNSQLGSPSPMPFQLNAITSALISGMVILGVTSFLLLLCSLALLHRKGPTSL VLNGIRNPVFD</p> <p>TRTRPLEQKLISEEDLAANDILDYKDDDDKV</p>
Tag:	C-Myc/DDK
Predicted MW:	47.2 kDa
Concentration:	>0.05 µg/µL as determined by microplate BCA method
Purity:	> 80% as determined by SDS-PAGE and Coomassie blue staining
Buffer:	25 mM Tris-HCl, 100 mM glycine, pH 7.3, 10% glycerol
Preparation:	Recombinant protein was captured through anti-DDK affinity column followed by conventional chromatography steps.
Note:	For testing in cell culture applications, please filter before use. Note that you may experience some loss of protein during the filtration process.
Storage:	Store at -80°C.
Stability:	Stable for 12 months from the date of receipt of the product under proper storage and handling conditions. Avoid repeated freeze-thaw cycles.
RefSeq:	<u>NP_778226</u>



[View online »](#)

Locus ID: 131368

UniProt ID: [Q8TCW7](#)

RefSeq Size: 3639

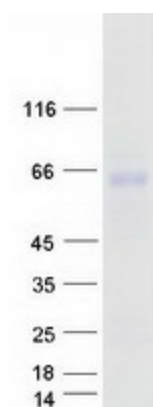
Cytogenetics: 3q12.3

RefSeq ORF: 1293

Summary: Glycoprotein which is a component of the gelatinous extracellular matrix in the cupulae of the vestibular organ.[UniProtKB/Swiss-Prot Function]

Protein Families: Transmembrane

Product images:



Coomassie blue staining of purified ZPLD1 protein (Cat# TP315551). The protein was produced from HEK293T cells transfected with ZPLD1 cDNA clone (Cat# [RC215551]) using MegaTran 2.0 (Cat# [TT210002]).