

Product datasheet for **TP315550M**

Hephaestin (HEPH) (NM_138737) Human Recombinant Protein

Product data:

Product Type: Recombinant Proteins
Description: Recombinant protein of human hephaestin (HEPH), transcript variant 1, 100 µg
Species: Human
Expression Host: HEK293T
Expression cDNA Clone or AA Sequence: >RC215550 representing NM_138737
Red=Cloning site Green=Tags(s)

MESGHLLWALLFMQSLWPQLTDGATRVYYLGIRDVQWNYAPKGRNVITNQPLDSDIVASSFLKSDKNRIG
 GTYKTIYKEYKDDSYTDEVAQPAWLGFLGPVLQAEVGDVILHLKNFATRPYTIHPHGVFYEKDSSEGL
 YPDGSSGPKADDSVPPGGSHIYNWTIPEGHAPTDADPACLTWIYHSHVDAPRDIATGLIGPLITCKRGA
 LDGNSPPQRQDVDHDFLLFSVDENLSWHLNENIATYCSDPASVDKEDETFQESNRMHAINGFVFGNLP
 ELNMQAQRVAWHLFGMGNEIDVHTAFFHGQMLTTRGHHTDVANIFPATFVTAEMVPWEPGTWLISCQVN
 SHFRDGMQALYKVKSCSMAPPVDLLTGKVRQYFIEAHEIQWDYGPMGHGSGTKNLREPGSISDKFFQKS
 SSRIGGTYWKVRYEAFQDETFQEKMHLEEDRHLGILGPVIRAEVGDTIQVVFYNRASQPFMMPHGVSFYE
 KDYEGTVYNDGSSYPGLVAKPFEKVTYRWTVPPHAGPTAQDPACLTWMYFSAADPIRDTNSGLVGPLLVC
 RAGALGADGKQKGVDKFLLFTVLDENKSWYSNANQAAAMLDFRLLSEIDIEGFQDSNRMHAINGFLFSN
 LPRLDMCKGDTVAVHLLGLGTETDVHGVMFQGNTVQLQGMKGAAMLPHTFVMAIMQPDNLGTFEICYCQ
 AGSHREAGMRAIYNVSQCPGHQATPRQRYQAARIYYIMAEVEWDYCPDRSWEREWHNQSEKDSYGYIFL
 SNKDGLLGSRYKKAUFREYTDGTFRIPRPTGPEEHLGILGPLIKGEVDILTVVFKNNASRPYSVHAHG
 VLESTTVWPLAAEPGEVVTYQWNIPERSGPGPNDSACVSWIYSAVDPIKDMYSGLVGPLAICQKGIPEP
 HGGRSMDREFALLFLIFDENKSWYLEENVATHGSQDPGSINLQDETFLESNKMHAINGKLYANLRGLTM
 YQGERVAWYMLAMGQDVDLHTIHFHAESFLYRNGENYRADVDLFPGTFEVEMVASNPGTWLMHCHVTD
 HVHAGMETLFTVFSRTEHLSPLTVITKETEKAVPPRDIEEGNVKMLGMQIPIKNVEMLASVLVAISVTL
 LVVLALGGVVWYQHRQRKLRRNRRSILDDSFKLLSFKQ

TRTRPLEQKLISEEDLAANDILDYKDDDDKV

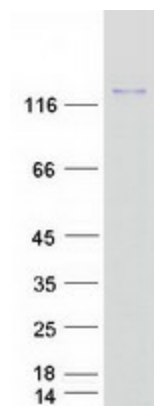
Tag: C-Myc/DDK
Predicted MW: 136.5 kDa
Concentration: >0.05 µg/µL as determined by microplate BCA method
Purity: > 80% as determined by SDS-PAGE and Coomassie blue staining
Buffer: 25 mM Tris-HCl, 100 mM glycine, pH 7.3, 10% glycerol



[View online »](#)

Preparation:	Recombinant protein was captured through anti-DDK affinity column followed by conventional chromatography steps.
Note:	For testing in cell culture applications, please filter before use. Note that you may experience some loss of protein during the filtration process.
Storage:	Store at -80°C.
Stability:	Stable for 12 months from the date of receipt of the product under proper storage and handling conditions. Avoid repeated freeze-thaw cycles.
RefSeq:	NP_620074
Locus ID:	9843
UniProt ID:	Q9BQS7
RefSeq Size:	4279
Cytogenetics:	Xq12
RefSeq ORF:	3474
Synonyms:	CPL
Summary:	This gene encodes a member of the multicopper oxidase protein family. The encoded protein is involved in the transport of dietary iron from epithelial cells of the intestinal lumen into the circulatory system, and may be involved in copper transport and homeostasis. In mouse, defects in this gene can lead to severe microcytic anemia. Alternative splicing results in multiple transcript variants. [provided by RefSeq, Aug 2013]
Protein Families:	Druggable Genome, Transmembrane

Product images:



Coomassie blue staining of purified HEPH protein (Cat# [TP315550]). The protein was produced from HEK293T cells transfected with HEPH cDNA clone (Cat# [RC215550]) using MegaTran 2.0 (Cat# [TT210002]).