

Product datasheet for **TP315546M**

PLEKHM1 (NM_014798) Human Recombinant Protein

Product data:

Product Type:	Recombinant Proteins
Description:	Recombinant protein of human pleckstrin homology domain containing, family M (with RUN domain) member 1 (PLEKHM1), 100 µg
Species:	Human
Expression Host:	HEK293T
Expression cDNA Clone or AA Sequence:	>RC215546 protein sequence Red =Cloning site Green =Tags(s)

MLSWENGLDPQAAIPVIKKKLVGSVKALQKQYVSLDVTWSEGDANTMCSALEAVFIHGLHAKHIRAE
AGGKRKSAHQKPLPQPVFWPLLKAVTHKHIIELEHLTFVNTDVGRCRAWLRLALNDGLMECYLKLQQ
EQARLHEYQPTALLRDAEEGEFLLSFLQGLTSLSFELSYKSAILNEWTLTPLALSGLCPLSELDPLSTS
GAELQRKESLDSISHSSGSEDIHVHSHGHKIRRQKLTASSLSLDTASSQLSCSLNSDSCLLQENGSKS
PDHCEPMSCSDSLGTANAEDSDRSLQEVLLFESKAQVNSVPTNGLSQETEIPTPQASLSLHGLNTSTYL
HCEAPAEPLPAQAASGTQDGVHVQEPRPQAPSPLDLQQPVESTSGQQPSSTVSETAREVGGQNGLQKAQA
HDGAGLKLWSSPTSPKNKSWISEDDEFYRPSREQPLESADHPIASYRGTPGSRPGLHRHFSQEPRKNCS
LGALDQACVPSPGRRQAQAAPSQGHKSFRVHRRQMGLSNPFRGLMKLGTVERRGAMGIWKELFCELSPL
EFRLYLSNEEHTCVENCSSLRCESVGAHSDGRFELVFSGKKLALRASSQDEAEDWLDREVREALQKVRPQ
QEDEWVNVQYPDQPEEPPEAPQGCLSPDLLSEPAALQGTQFDWSSAQVPEPDAIKESLLYLYMDRTWMP
YIFLSLEALKCFRIRNNEKMLSDSHGVETIRDILPDTSLGGPSFFKIITAKAVLKLQAGNAEEAALWRD
LVRKVLASYLETAEEAVTLGGSLDENCQEVLFATRENGFLLQYLVAIPMEKGLDSQGCFCAGCSRQIGF
SFVRPKLCAFSGLYCDICHQDDASVIPARIHNWDLTKRPICRQALKFLTQIRAQPLINLQMVNASLYE
HVERMHLIGRRREQLKLLGDYLGCRSGALKELSKRLNHRNYLLESPHRFSVADLQIADGVYEGFLKAL
IEFASQHVYHCDLCTQRGFICQICQHHDIIFFEFDDTTVRCAECKTVFHQSCQAVVKKGCPCARRRKYQ
EQNIFA

SGPTRTRPLEQKLISEEDLAANDILDYKDDDDKV

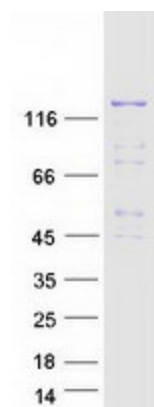
Tag:	C-Myc/DDK
Predicted MW:	117.3 kDa
Concentration:	>0.05 µg/µL as determined by microplate BCA method
Purity:	> 80% as determined by SDS-PAGE and Coomassie blue staining
Buffer:	25 mM Tris-HCl, 100 mM glycine, pH 7.3, 10% glycerol



[View online »](#)

Preparation:	Recombinant protein was captured through anti-DDK affinity column followed by conventional chromatography steps.
Note:	For testing in cell culture applications, please filter before use. Note that you may experience some loss of protein during the filtration process.
Storage:	Store at -80°C.
Stability:	Stable for 12 months from the date of receipt of the product under proper storage and handling conditions. Avoid repeated freeze-thaw cycles.
RefSeq:	NP_055613
Locus ID:	9842
UniProt ID:	Q9Y4G2
RefSeq Size:	5313
Cytogenetics:	17q21.31
RefSeq ORF:	3168
Synonyms:	AP162; B2; OPTA3; OPTB6
Summary:	The protein encoded by this gene is essential for bone resorption, and may play a critical role in vesicular transport in the osteoclast. Mutations in this gene are associated with autosomal recessive osteopetrosis type 6 (OPTB6). Alternatively spliced transcript variants have been found for this gene. [provided by RefSeq, Sep 2009]

Product images:



Coomassie blue staining of purified PLEKHM1 protein (Cat# [TP315546]). The protein was produced from HEK293T cells transfected with PLEKHM1 cDNA clone (Cat# [RC215546]) using MegaTran 2.0 (Cat# [TT210002]).