

## Product datasheet for **TP315546L**

### PLEKHM1 (NM\_014798) Human Recombinant Protein

#### Product data:

Product Type:	Recombinant Proteins
Description:	Recombinant protein of human pleckstrin homology domain containing, family M (with RUN domain) member 1 (PLEKHM1), 1 mg
Species:	Human
Expression Host:	HEK293T
Expression cDNA Clone or AA Sequence:	>RC215546 protein sequence <b>Red</b> =Cloning site <b>Green</b> =Tags(s)

MLSWENGLDPQAAIPVIKKKLVGSVKALQKQYVSLDVTWSEDGDANTMCSALEAVFIHGLHAKHIRAE  
 AGGKRKSAHQKPLPQPVFWPLLKAVTHKHIIELEHLTFVNTDVGRCLAWLRALNDGLMECYLKLQ  
 EQARLHEYQPTALLRDAEEGEFLLSFLQGLTSLSFELSYKSAILNEWTLPLALSGLCPLSELDPLSTS  
 GAELQRKESLDSISHSSGSEIDIEVHSHGHKIRRNQKLTASSLSLDTASSQLSCSLNSDSCLLQENGSKS  
 PDHCEPMSCSDSLGTANAEDSDRSLQEVLLFESKAQVNSVPTNGLSQETEIPTPQASLSLHGLNTSTYL  
 HCEAPAEPLPAQAASGTQDGVHVQEPRPQAPSPLDLQQPVESTSGQQPSSTVSETAREVGGQNGLQKAQA  
 HDGAGLKLIVSSPTSPKNKSWISEDFFYRPSREQPLESADHPIASYRGTPGSRPGLHRHFSQEPRKNCS  
 LGALDQACVPSPGRRQAQAAPSQGHKSFRVHRRQMGLSNPFRGLMKLGTVERRGAMGIWKELFCELSPL  
 EFRLYLSNEEHTCVENCSSLRCESVGAHSDGRFELVFSGKKLALRASSQDEAEDWLDREVREALQKVRPQ  
 QEDEWVNVQYPDQPEEPPEAPQGCLSPDLLSEPAALQGTQFDWSSAQVPEPDAIKESLLYLYMDRTWMP  
 YIFLSLEALKCFRIRNNEKMLSDSHGVETIRDILPDTSLGGPSFFKIITAKAVLKLQAGNAEEAALWRD  
 LVRKVLASYLETAEEAVTLGGSLDENCQEVLFATRENGFLLQYLVAIPMEKGLDSQGCFCAGCSRQIGF  
 SFVRPKLCAFSGLYCDICHQDDASVIPARIHNWDLTKRPICRQALKFLTQIRAQPLINLQMVNASLYE  
 HVERMHLIGRRREQKLLGDYLGLCRSGALKELSKRLNHRNYLLESPHRFSVADLQIADGVYEGFLKAL  
 IEFASQHVYHCDLCTQRGFICQICQHHDIIFFPEFDTTVRCAECKTVFHQSCQAVVKKGCPCARRRKYQ  
 EQNIFA

**SGPTRTRPLEQKLISEEDLAANDILDYKDDDDKV**

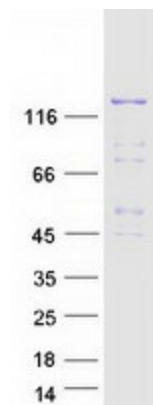
Tag:	C-Myc/DDK
Predicted MW:	117.3 kDa
Concentration:	>0.05 µg/µL as determined by microplate BCA method
Purity:	> 80% as determined by SDS-PAGE and Coomassie blue staining
Buffer:	25 mM Tris-HCl, 100 mM glycine, pH 7.3, 10% glycerol



[View online »](#)

<b>Preparation:</b>	Recombinant protein was captured through anti-DDK affinity column followed by conventional chromatography steps.
<b>Note:</b>	For testing in cell culture applications, please filter before use. Note that you may experience some loss of protein during the filtration process.
<b>Storage:</b>	Store at -80°C.
<b>Stability:</b>	Stable for 12 months from the date of receipt of the product under proper storage and handling conditions. Avoid repeated freeze-thaw cycles.
<b>RefSeq:</b>	<a href="#">NP_055613</a>
<b>Locus ID:</b>	9842
<b>UniProt ID:</b>	<a href="#">Q9Y4G2</a>
<b>RefSeq Size:</b>	5313
<b>Cytogenetics:</b>	17q21.31
<b>RefSeq ORF:</b>	3168
<b>Synonyms:</b>	AP162; B2; OPTA3; OPTB6
<b>Summary:</b>	The protein encoded by this gene is essential for bone resorption, and may play a critical role in vesicular transport in the osteoclast. Mutations in this gene are associated with autosomal recessive osteopetrosis type 6 (OPTB6). Alternatively spliced transcript variants have been found for this gene. [provided by RefSeq, Sep 2009]

### Product images:



Coomassie blue staining of purified PLEKHM1 protein (Cat# [TP315546]). The protein was produced from HEK293T cells transfected with PLEKHM1 cDNA clone (Cat# [RC215546]) using MegaTran 2.0 (Cat# [TT210002]).