

Product datasheet for TP315496

STK23 (SRPK3) (NM_014370) Human Recombinant Protein

Product data:

| | |
|---------------------------------------|--|
| Product Type: | Recombinant Proteins |
| Description: | Recombinant protein of human SFRS protein kinase 3 (SRPK3), 20 µg |
| Species: | Human |
| Expression Host: | HEK293T |
| Expression cDNA Clone or AA Sequence: | >RC215496 protein sequence Red =Cloning site Green =Tags(s) |

MSASTGGGGDSGGSGSSSSSQASCGPESSGSELALATPVPQMLQGLLGSDDEEQEDPKDYCKGGYHPV
K
IGDVFNGRYHVVRKLGWGHFSTVWLCWDIQRKRFVALKVVKSAGHYTETAVDEIKLLKCVRSDSPDPKR
ETIVQLIDDFRISGVNGVHVCMLVLEVLGHQLLKWIKSNYQGLPVPCVKSIVRQVLHGLDYLHTKCKIIH
TDIKPENILLCVGDAYIRRLAAEATEWQQAGAPPPSRIVSTAPQEVLTGKLSKNKRKKMRRKRKQQR
LLEERLQRLQLEAMEAATQAEDSGLRLDGGSGSTSSSGCHPGGARAGPSPASSPAPGGGRSLSAGSQT
SGFSGSLFSPASCSILSGSSNQRETGGLLSPSTPFGASNLLVNPLEPQNADKIKIKIADLGNACWVHKHF
TEDIQTRQYRAVEVLIGAEYGPPADIWSTACMAFELATGDYLFEPHSGEDYSRDEDHIAHIVELLGDI
PPAFALSGRYSREFFNRRGELRHIHNLKHWGLYEVLMEKEYEWPLEQATQFSAFLPMMEYIPEKRASAADCL
QHPWLNP

TRTRPLEQKLISEEDLAANDILDYKDDDDKV

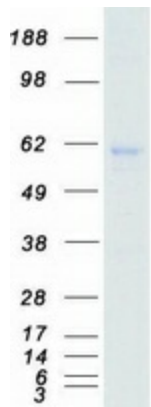
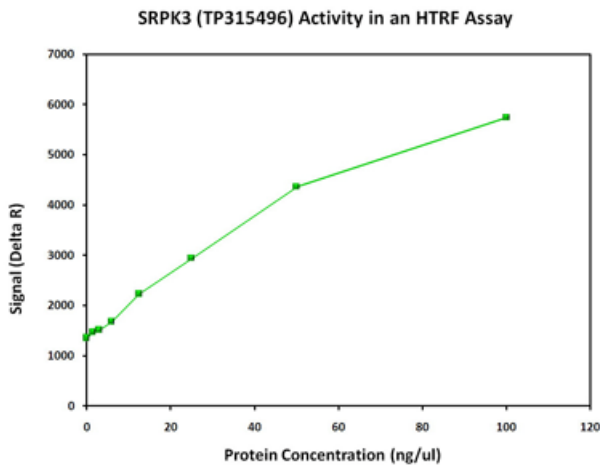
| | |
|----------------|---|
| Tag: | C-Myc/DDK |
| Predicted MW: | 61.8 kDa |
| Concentration: | >0.05 µg/µL as determined by microplate BCA method |
| Purity: | > 80% as determined by SDS-PAGE and Coomassie blue staining |
| Buffer: | 25 mM Tris-HCl, 100 mM glycine, pH 7.3, 10% glycerol |



[View online »](#)

| | |
|--------------------------|---|
| Bioactivity: | SRPK3 activity verified in a biochemical assay: SRPK3 (SRSF protein kinase 3) (TP315496) activity was measured in a homogeneous time-resolved fluorescent (HTRF®) assay. SRPK3 is a serine/threonine kinase similar to a protein kinase which is specific for the SR (serine/arginine-rich domain) family of splicing factors. Varying concentrations of SRPK3 were added to a reaction mix containing ATP and a biotinylated kinase substrate and the reaction mixture was incubated to allow the protein to phosphorylate the substrate. HTRF detection reagents were then added, and the time-resolved fluorescent signal was measured on a Flexstation 3 microplate reader. The time resolved fluorescent signal is expressed as “delta R” or “ ΔR ” and is a ratio calculated from the fluorescent emission intensities of the donor and acceptor fluors. |
| Preparation: | Recombinant protein was captured through anti-DDK affinity column followed by conventional chromatography steps. |
| Note: | For testing in cell culture applications, please filter before use. Note that you may experience some loss of protein during the filtration process. |
| Storage: | Store at -80°C. |
| Stability: | Stable for 12 months from the date of receipt of the product under proper storage and handling conditions. Avoid repeated freeze-thaw cycles. |
| RefSeq: | NP_055185 |
| Locus ID: | 26576 |
| UniProt ID: | Q9UPE1 |
| RefSeq Size: | 2014 |
| Cytogenetics: | Xq28 |
| RefSeq ORF: | 1701 |
| Synonyms: | MSSK-1; MSSK1; STK23 |
| Summary: | This gene encodes a protein kinase similar to a protein kinase which is specific for the SR (serine/arginine-rich domain) family of splicing factors. A highly similar protein has been shown to play a role in muscle development in mice. Multiple transcript variants encoding different isoforms have been found for this gene. [provided by RefSeq, Dec 2009] |
| Protein Families: | Druggable Genome, Protein Kinase |

Product images:



Coomassie blue staining of purified SRPK3 protein (Cat# TP315496). The protein was produced from HEK293T cells transfected with SRPK3 cDNA clone (Cat# [RC215496]) using MegaTran 2.0 (Cat# [TT210002]).