

## Product datasheet for **TP315477L**

### SynCAM (CADM1) (NM\_014333) Human Recombinant Protein

#### Product data:

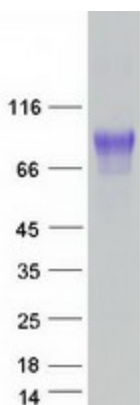
Product Type:	Recombinant Proteins
Description:	Recombinant protein of human cell adhesion molecule 1 (CADM1), transcript variant 1, 1 mg
Species:	Human
Expression Host:	HEK293T
Expression cDNA Clone or AA Sequence:	>RC215477 representing NM_014333 <b>Red</b> =Cloning site <b>Green</b> =Tags(s)
	 MASVVLPSGSQCAAAAAAAAAAPPGLRLRLLLLLFSAAALIPTGDGQNLFTKDVTVIEGEVATISCQVNKSD DSVIQLLNPNRQTIYFRDFRPLKDSRFQLLNFSSELKVSLTNVISISDEGRYFCQLYTDPPQESYTTITV LVPPRNLMIDIQKDTAVEGEEIEVNCTAMASKPATTIRWFKGNTELKKGKSEVEEWSDMYTVTSQLMLKVH KEDDGVPVICQVEHPAVTGNLQTRYLEVQYKQVHIQMTYPLQGLTREGDALELTCEAIGKPQPMVMTW VRVDEMPQHAVLSGPNLFINNLNKTNDNGTYRCEASNIVGKAHSYMLYVYDPPTTIPPPTTTTTTTTTTT TTTILTIITDSRAGEEGSIRAVDHAVIGGVAVVVFAMLCLLIILGRYFARHKGTYFTHEAKGADDAADA DTAIINAEGGQNNSEEKKEYFI  <b>TRTRPLEQKLISEEDLAANDILDYKDDDDKV</b>
Tag:	C-Myc/DDK
Predicted MW:	48.3 kDa
Concentration:	>0.05 µg/µL as determined by microplate BCA method
Purity:	> 80% as determined by SDS-PAGE and Coomassie blue staining
Buffer:	25 mM Tris-HCl, 100 mM glycine, pH 7.3, 10% glycerol
Preparation:	Recombinant protein was captured through anti-DDK affinity column followed by conventional chromatography steps.
Note:	For testing in cell culture applications, please filter before use. Note that you may experience some loss of protein during the filtration process.
Storage:	Store at -80°C.
Stability:	Stable for 12 months from the date of receipt of the product under proper storage and handling conditions. Avoid repeated freeze-thaw cycles.
RefSeq:	<u><a href="#">NP_055148</a></u>



[View online »](#)

Locus ID:	23705
UniProt ID:	<a href="#">Q9BY6Z</a> , <a href="#">X5D8W0</a>
RefSeq Size:	3512
Cytogenetics:	11q23.3
RefSeq ORF:	1326
Synonyms:	BL2; IGSF4; IGSF4A; Necl-2; NECL2; RA175; sgIGSF; ST17; sTSLC-1; SYNCAM; synCAM1; TSLC1
Summary:	Mediates homophilic cell-cell adhesion in a Ca(2+)-independent manner. Also mediates heterophilic cell-cell adhesion with CADM3 and NECTIN3 in a Ca(2+)-independent manner. Acts as a tumor suppressor in non-small-cell lung cancer (NSCLC) cells. Interaction with CRTAM promotes natural killer (NK) cell cytotoxicity and interferon-gamma (IFN-gamma) secretion by CD8+ cells in vitro as well as NK cell-mediated rejection of tumors expressing CADM3 in vivo. May contribute to the less invasive phenotypes of lepidic growth tumor cells. In mast cells, may mediate attachment to and promote communication with nerves. CADM1, together with MITF, is essential for development and survival of mast cells in vivo. Acts as a synaptic cell adhesion molecule and plays a role in the formation of dendritic spines and in synapse assembly (By similarity). May be involved in neuronal migration, axon growth, pathfinding, and fasciculation on the axons of differentiating neurons. May play diverse roles in the spermatogenesis including in the adhesion of spermatocytes and spermatids to Sertoli cells and for their normal differentiation into mature spermatozoa.[UniProtKB/Swiss-Prot Function]
Protein Families:	Transmembrane
Protein Pathways:	Cell adhesion molecules (CAMs)

### Product images:



Coomassie blue staining of purified CADM1 protein (Cat# [TP315477]). The protein was produced from HEK293T cells transfected with CADM1 cDNA clone (Cat# [RC215477]) using MegaTran 2.0 (Cat# [TT210002]).