

Product datasheet for **TP315474**

DAPP1 (NM_014395) Human Recombinant Protein

Product data:

Product Type:	Recombinant Proteins
Description:	Recombinant protein of human dual adaptor of phosphotyrosine and 3-phosphoinositides (DAPP1), 20 µg
Species:	Human
Expression Host:	HEK293T
Expression cDNA Clone or AA Sequence:	>RC215474 representing NM_014395 Red =Cloning site Green =Tags(s)

MGRAELLEGK MSTQDPSDLWSRSDGAEALLQDLGWYHG NLTRHAAEALLSNGCDG SYLLRDSNETTGLY
SLSVRAKDSVKHFHVEYTGYSFKFGFNEFSSLKDFVKHFANQPLIGSETG TLMVLKHPYPRKVEEPISE
SVRVHTAMQTGRTEDDLVP TAPSLGTEGYLTKQGGLVKTWKTRWFTLHRNELKYFKDQMSPEPIRILD
TECSAVQFDYSQERVNCFCLVFPFRTFYLC AKTGVEADEWIKILRWKLSQIRKQLNQEGGTIRSRSFIFK

TRTRPLEQKLISEEDLAANDILDYKDDDDKV

Tag:	C-Myc/DDK
Predicted MW:	32 kDa
Concentration:	>0.05 µg/µL as determined by microplate BCA method
Purity:	> 80% as determined by SDS-PAGE and Coomassie blue staining
Buffer:	25 mM Tris-HCl, 100 mM glycine, pH 7.3, 10% glycerol
Preparation:	Recombinant protein was captured through anti-DDK affinity column followed by conventional chromatography steps.
Note:	For testing in cell culture applications, please filter before use. Note that you may experience some loss of protein during the filtration process.
Storage:	Store at -80°C.
Stability:	Stable for 12 months from the date of receipt of the product under proper storage and handling conditions. Avoid repeated freeze-thaw cycles.
RefSeq:	<u>NP_055210</u>
Locus ID:	27071



[View online »](#)

UniProt ID: [Q9UN19](#)

RefSeq Size: 2953

Cytogenetics: 4q23

RefSeq ORF: 840

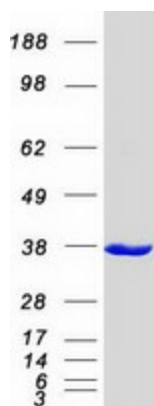
Synonyms: BAM32

Summary: May act as a B-cell-associated adapter that regulates B-cell antigen receptor (BCR)-signaling downstream of PI3K.[UniProtKB/Swiss-Prot Function]

Protein Families: Druggable Genome, Phosphatase

Protein Pathways: B cell receptor signaling pathway

Product images:



Coomassie blue staining of purified DAPP1 protein (Cat# TP315474). The protein was produced from HEK293T cells transfected with DAPP1 cDNA clone (Cat# [RC215474]) using MegaTran 2.0 (Cat# [TT210002]).