

## Product datasheet for **TP315455L**

### ENAH (NM\_018212) Human Recombinant Protein

#### Product data:

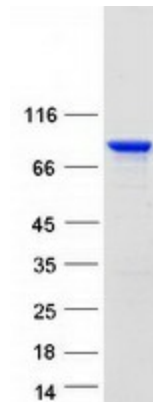
Product Type:	Recombinant Proteins
Description:	Recombinant protein of human enabled homolog (Drosophila) (ENAH), transcript variant 2, 1 mg
Species:	Human
Expression Host:	HEK293T
Expression cDNA Clone or AA Sequence:	>RC215455 representing NM_018212 <b>Red</b> =Cloning site <b>Green</b> =Tags(s)
	MSEQSICQARAAMVYDDANKKWVPAGGSTGFSRVHIYHHTGNNTFRVVGRIQDHQWINCAIPKGLKY NQATQTFHQWRDARQVYGLNFGSKEDANVFASAMMHLEVLNSQETGPTLPRQNSQLPAQVQNGPSQEEL EIQRRQLQEQRQKELERLEREREMERERLERERLERERLERERLEQEQLERERQERERQERLERQERL ERQERLERQERLDRERQERERLERERERQERERQEQLEREQLEWERERRISSAAAPASVETPLNSV LGDSSASEPGLQAASQPAETPSQQGIVLGPLAPPPPPPLPPGPAQASVALPPPPGPPPPPLPSTGPPPP PPPPPLPNQVPPPPPPPPAPPLPASGFFLASMEDNRPLTGLAAAIAGAKLRKVS RMEDTSFPPSGGNAIG VNSASSKTDGTGRNGPLPLGGGSLMEEMSALLARRRRRIAEKGSTIETE QKEDKGEDSEPVTSKASSTSTP EPTRKPWERTNTMNGSKSPVISRPKSTPLSQPSANGVQTEGLDYDRLKQDILDEM RKELTKLKEELIDAI RQELSKSNTA
	<b>TRTRPLEQKLISEEDLAANDILDYKDDDDKV</b>
Tag:	C-Myc/DDK
Predicted MW:	63.7 kDa
Concentration:	>0.05 µg/µL as determined by microplate BCA method
Purity:	> 80% as determined by SDS-PAGE and Coomassie blue staining
Buffer:	25 mM Tris-HCl, 100 mM glycine, pH 7.3, 10% glycerol
Preparation:	Recombinant protein was captured through anti-DDK affinity column followed by conventional chromatography steps.
Note:	For testing in cell culture applications, please filter before use. Note that you may experience some loss of protein during the filtration process.
Storage:	Store at -80°C.



[View online »](#)

<b>Stability:</b>	Stable for 12 months from the date of receipt of the product under proper storage and handling conditions. Avoid repeated freeze-thaw cycles.
<b>RefSeq:</b>	<a href="#">NP_060682</a>
<b>Locus ID:</b>	55740
<b>UniProt ID:</b>	<a href="#">Q8N8S7</a> , <a href="#">A0A4D6J698</a>
<b>RefSeq Size:</b>	13109
<b>Cytogenetics:</b>	1q42.12
<b>RefSeq ORF:</b>	1710
<b>Synonyms:</b>	ENA; MENA; NDPP1
<b>Summary:</b>	This gene encodes a member of the enabled/ vasodilator-stimulated phosphoprotein. Members of this gene family are involved in actin-based motility. This protein is involved in regulating the assembly of actin filaments and modulates cell adhesion and motility. Alternate splice variants of this gene have been correlated with tumor invasiveness in certain tissues and these variants may serve as prognostic markers. A pseudogene of this gene is found on chromosome 3. [provided by RefSeq, Sep 2016]
<b>Protein Pathways:</b>	Regulation of actin cytoskeleton

### Product images:



Coomassie blue staining of purified ENAH protein (Cat# [TP315455]). The protein was produced from HEK293T cells transfected with ENAH cDNA clone (Cat# [RC215455]) using MegaTran 2.0 (Cat# [TT210002]).