

Product datasheet for **TP315437L**

G0 Protein alpha (GNAO1) (NM_138736) Human Recombinant Protein

Product data:

Product Type: Recombinant Proteins

Description: Recombinant protein of human guanine nucleotide binding protein (G protein), alpha activating activity polypeptide O (GNAO1), transcript variant 2, 1 mg

Species: Human

Expression Host: HEK293T

Expression cDNA Clone or AA Sequence: >RC215437 protein sequence
Red=Cloning site **Green**=Tags(s)

MGCTLSAEERAALERSKAIEKNLKEDGISA AKDVKLLLLGAGESGKSTIVKQMKIIHEDGFSGEDVKQYK
PVVYSNTIQSLAAIVRAMDTLGIEYGDKERKADAKMVCDVWSRMEDTEPFSAELLSAMMRLWGD SGIQEC
FNRSREYQLNDSAKYYLDSLDRIGAADYQPTEQDILRTRVKTTGIVETHFTFKNLHFR LFDVGGQRSEK
KWIHCFEDVTAIIFCVALSGYDQVLHEDETTNRMHESLKLFD S ICNNKWFTDTSIILFLNKKDIFEEKIK
KSPLTICFPEYTGPSAFTEAVAYIQAQYESKNKSAHKEYIYTHVTCATDTNNIQVFVDAVTDVIIAKNLRG
CGLY

TRTRPLEQKLISEEDLAANDILDYKDDDDKV

Tag: C-Myc/DDK

Predicted MW: 39.9 kDa

Concentration: >0.05 µg/µL as determined by microplate BCA method

Purity: > 80% as determined by SDS-PAGE and Coomassie blue staining

Buffer: 25 mM Tris-HCl, 100 mM glycine, pH 7.3, 10% glycerol

Preparation: Recombinant protein was captured through anti-DDK affinity column followed by conventional chromatography steps.

Note: For testing in cell culture applications, please filter before use. Note that you may experience some loss of protein during the filtration process.

Storage: Store at -80°C.

Stability: Stable for 12 months from the date of receipt of the product under proper storage and handling conditions. Avoid repeated freeze-thaw cycles.

RefSeq: [NP_620073](#)



[View online »](#)

Locus ID: 2775

UniProt ID: [P09471](#), [Q6AWC5](#), [B3KP89](#), [Q8N6I9](#)

RefSeq Size: 6061

Cytogenetics: 16q13

RefSeq ORF: 1065

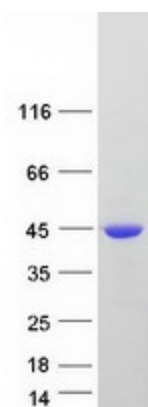
Synonyms: DEE17; EIEE17; G-ALPHA-o; GNAO; HLA-DQB1; NEDIM

Summary: The protein encoded by this gene represents the alpha subunit of the Go heterotrimeric G-protein signal-transducing complex. Defects in this gene are a cause of early-onset epileptic encephalopathy. Two transcript variants encoding different isoforms have been found for this gene. [provided by RefSeq, Aug 2015]

Protein Families: Druggable Genome

Protein Pathways: Long-term depression, Melanogenesis

Product images:



Coomassie blue staining of purified GNAO1 protein (Cat# [TP315437]). The protein was produced from HEK293T cells transfected with GNAO1 cDNA clone (Cat# [RC215437]) using MegaTran 2.0 (Cat# [TT210002]).