

## Product datasheet for **TP315415**

### **GTF2H2C (NM\_001098728) Human Recombinant Protein**

#### Product data:

Product Type:	Recombinant Proteins
Description:	Recombinant protein of human general transcription factor IIH, polypeptide 2C (GTF2H2C), 20 µg
Species:	Human
Expression Host:	HEK293T
Expression cDNA Clone or AA Sequence:	>RC215415 representing NM_001098728 <b>Red</b> =Cloning site <b>Green</b> =Tags(s)

MDEEPERTKRWEGGYERTWEILKEDESGSLKATIEDILFKAKRKRVEHHGQVRLGMMRHLYVVDGSRT  
MEDQDLKPNRLTCTLKLEYFVEEYFDQNPISQIGIIVTKSKRAEKLTELSGNPRKHITSLKEAVDMTCH  
GEPSLYNSLSMAMQTLKHMPGHTSREVLIIFFSLTTCDPNSNIYDLIKTLKAAKIRVSVIGLSAEVRVCTV  
LARETGTTYHVILDESHYKELLTHHLSPPPPASSSSECSLIRMGFPQHTIASLSDQDAKPSFSMAHLDGNT  
EPGLTLGGYFCPQCRAKYCELPVECKICGLTLVSAPHLARSYHHLPDLDAFQEIPLEEYNGERFCYGCQG  
ELKDQHVYVCAVCQNVFCVDCDVFVHDSLHCCPGCIHKIPAPSGV

**TR**TRPLEQKLISEEDLAANDILDYKDDDDKV

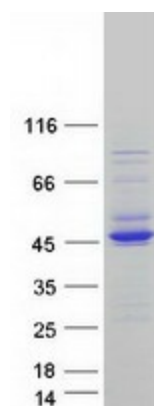
Tag:	C-Myc/DDK
Predicted MW:	44.3 kDa
Concentration:	>0.05 µg/µL as determined by microplate BCA method
Purity:	> 80% as determined by SDS-PAGE and Coomassie blue staining
Buffer:	25 mM Tris-HCl, 100 mM glycine, pH 7.3, 10% glycerol
Preparation:	Recombinant protein was captured through anti-DDK affinity column followed by conventional chromatography steps.
Note:	For testing in cell culture applications, please filter before use. Note that you may experience some loss of protein during the filtration process.
Storage:	Store at -80°C.
Stability:	Stable for 12 months from the date of receipt of the product under proper storage and handling conditions. Avoid repeated freeze-thaw cycles.
RefSeq:	<u>NP_001092198</u>



[View online »](#)

**Locus ID:** 728340  
**UniProt ID:** [Q6P1K8](#)  
**RefSeq Size:** 2106  
**Cytogenetics:** 5q13.2  
**RefSeq ORF:** 1185  
**Synonyms:** GTF2H2C\_2  
**Protein Families:** Druggable Genome

### Product images:



Coomassie blue staining of purified GTF2H2C protein (Cat# TP315415). The protein was produced from HEK293T cells transfected with GTF2H2C cDNA clone (Cat# [RC215415]) using MegaTran 2.0 (Cat# [TT210002]).