

## Product datasheet for **TP315414**

### **TMPPE (NM\_001039770) Human Recombinant Protein**

#### **Product data:**

**Product Type:** Recombinant Proteins

**Description:** Recombinant protein of human transmembrane protein with metallophosphoesterase domain (TMPPE), transcript variant 1, 20 µg

**Species:** Human

**Expression Host:** HEK293T

**Expression cDNA Clone or AA Sequence:** >RC215414 representing NM\_001039770  
**Red**=Cloning site **Green**=Tags(s)

MAIFRQLSLGAKATLAAVTVFVSMIASRSYLAESLELRARWLLRLQLALFVNSLLIGSLYIWRSTVSN  
LCHSPAAESTCFQLWKVWVLAFLALAHSSFFTMFFLVAEEPFLSFLAAYSCLGAYIIMLFFLFILSGMEQ  
AYQLLAWRSGRVVGSLKTRKLVLRPALAVGVTAVLSVAGILNAAQPPAVKTVEVPIHQLPASMNNLKIV  
LLSDIHLGPTVGRTKMEMFVRMVNVLEPDITVIVGDLSDSEASVLRRTAVAPLGQLHSHLGAYFVTGNHEY  
YTSDVSNWFALLES LHVQPLHNENVKISATRAQRGGGGSGSGSEDEDWICLAGVDDIEADILHYSGHGMD  
LDKALEGCSPDHTIILLAHQPLAAKRALQARPDINLILSGHTHAGQIFPLNVAAYLLNPFAGLYQVAQA  
TFVYVSPGTAYYGIPMRLGSRAEITELILQRSP

**TRTRPLEQKLISEEDLAANDILDYKDDDDKV**

**Tag:** C-Myc/DDK

**Predicted MW:** 49.3 kDa

**Concentration:** >0.05 µg/µL as determined by microplate BCA method

**Purity:** > 80% as determined by SDS-PAGE and Coomassie blue staining

**Buffer:** 25 mM Tris-HCl, 100 mM glycine, pH 7.3, 10% glycerol

**Preparation:** Recombinant protein was captured through anti-DDK affinity column followed by conventional chromatography steps.

**Note:** For testing in cell culture applications, please filter before use. Note that you may experience some loss of protein during the filtration process.

**Storage:** Store at -80°C.

**Stability:** Stable for 12 months from the date of receipt of the product under proper storage and handling conditions. Avoid repeated freeze-thaw cycles.



[View online »](#)

RefSeq: [NP\\_001034859](#)

Locus ID: 643853

UniProt ID: [Q6ZT21](#)

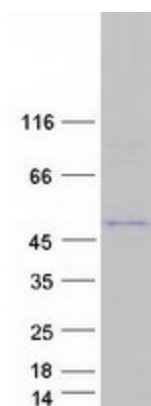
RefSeq Size: 3962

Cytogenetics: 3p22.3

RefSeq ORF: 1359

Protein Families: Transmembrane

### Product images:



Coomassie blue staining of purified TMPPE protein (Cat# TP315414). The protein was produced from HEK293T cells transfected with TMPPE cDNA clone (Cat# [RC215414]) using MegaTran 2.0 (Cat# [TT210002]).