

Product datasheet for **TP315358L**

LOC401052 (NM_001008737) Human Recombinant Protein

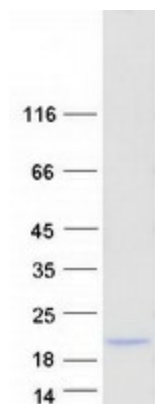
Product data:

Product Type:	Recombinant Proteins
Description:	Recombinant protein of human hypothetical LOC401052 (LOC401052), 1 mg
Species:	Human
Expression Host:	HEK293T
Expression cDNA Clone or AA Sequence:	>RC215358 representing NM_001008737 Red =Cloning site Green =Tags(s) MSAIWRLAAKGDEQAKVARPACRPAAAVSCHQPSPDTQDACLTQKHSYVRPLRGSASCHCYQKKKPS K QKGQCHTRQPGAQQNKWPPKALWGPHPATDPSTVWFGLQDPPGDLSA TRTRPLEQKLISEEDLAANDILDYKDDDDKV
Tag:	C-Myc/DDK
Predicted MW:	12.7 kDa
Concentration:	>0.05 µg/µL as determined by microplate BCA method
Purity:	> 80% as determined by SDS-PAGE and Coomassie blue staining
Buffer:	25 mM Tris-HCl, 100 mM glycine, pH 7.3, 10% glycerol
Preparation:	Recombinant protein was captured through anti-DDK affinity column followed by conventional chromatography steps.
Note:	For testing in cell culture applications, please filter before use. Note that you may experience some loss of protein during the filtration process.
Storage:	Store at -80°C.
Stability:	Stable for 12 months from the date of receipt of the product under proper storage and handling conditions. Avoid repeated freeze-thaw cycles.
RefSeq:	<u>NP_001008737</u>
Locus ID:	401052
RefSeq Size:	1897
Cytogenetics:	3p25.3


[View online »](#)

RefSeq ORF: 354

Product images:



Coomassie blue staining of purified LOC401052 protein (Cat# [TP315358]). The protein was produced from HEK293T cells transfected with LOC401052 cDNA clone (Cat# [RC215358]) using MegaTran 2.0 (Cat# [TT210002]).