

Product datasheet for **TP315354L**

nkx6.3 (NKX6-3) (NM_152568) Human Recombinant Protein

Product data:

Product Type:	Recombinant Proteins
Description:	Recombinant protein of human NK6 homeobox 3 (NKX6-3), 1 mg
Species:	Human
Expression Host:	HEK293T
Expression cDNA Clone or AA Sequence:	>RC215354 representing NM_152568 Red =Cloning site Green =Tags(s) MQQGQLAPGSRRLCSGPWGLPELQPAAPSSSAAQLPWGESWGEEADTPACLSASGVWFQNRRTKWRKKSAL EPSSSTPRAPGGAGAGAGGDRAPSENEDEYNKPLDPDSDDEKIRLLLLRKHRAAFSVLSLGAHSV TRTRPLEQKLISEEDLAANDILDYKDDDDKV
Tag:	C-Myc/DDK
Predicted MW:	14.1 kDa
Concentration:	>0.05 µg/µL as determined by microplate BCA method
Purity:	> 80% as determined by SDS-PAGE and Coomassie blue staining
Buffer:	25 mM Tris-HCl, 100 mM glycine, pH 7.3, 10% glycerol
Preparation:	Recombinant protein was captured through anti-DDK affinity column followed by conventional chromatography steps.
Note:	For testing in cell culture applications, please filter before use. Note that you may experience some loss of protein during the filtration process.
Storage:	Store at -80°C.
Stability:	Stable for 12 months from the date of receipt of the product under proper storage and handling conditions. Avoid repeated freeze-thaw cycles.
RefSeq:	NP_689781
Locus ID:	157848
UniProt ID:	A6NJ46
RefSeq Size:	1640
Cytogenetics:	8p11.21



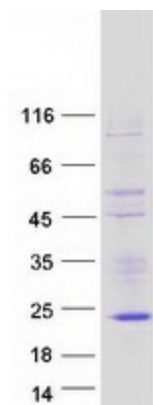
[View online »](#)

RefSeq ORF: 405

Synonyms: NKX6.3

Summary: The NKX family of homeodomain proteins controls numerous developmental processes. Members of the NKX6 subfamily, including NKX6-3, are involved in development of the central nervous system (CNS), gastrointestinal tract, and pancreas (Alanentalo et al., 2006 [PubMed 16326147]).[supplied by OMIM, Mar 2008]

Product images:



Coomassie blue staining of purified NKX6-3 protein (Cat# [TP315354]). The protein was produced from HEK293T cells transfected with NKX6-3 cDNA clone (Cat# [RC215354]) using MegaTran 2.0 (Cat# [TT210002]).