

## Product datasheet for TP315323L

### FYCO1 (NM\_024513) Human Recombinant Protein

#### Product data:

**Product Type:** Recombinant Proteins  
**Description:** Recombinant protein of human FYVE and coiled-coil domain containing 1 (FYCO1), 1 mg  
**Species:** Human  
**Expression Host:** HEK293T  
**Expression cDNA Clone or AA Sequence:** >RC215323 protein sequence  
Red=Cloning site Green=Tags(s)

MASTNAESQLQRIIRDLQDAVTELSKEFQEAGEPITDDSTSLHKFSYKLEYLLQFDQKEKATLLGNKKDY  
 WDYFCACLAKVKGANDGIRFVKSISELRTSLGKGRAFIYSLVHQRLADTLQQCFMNTKVTSDWYYARSP  
 FLQPKLSSDIVGQLYELTEVQFDLASRGFDLDAWPTFARRTLTGSSAYLWKPPSRSSSMSSLVSSYLQ  
 TQEMVSNFDLNSPLNNEALEGFDEMRELDQLEVREKQLRERMQQLDRENQELRAAVSQQGEQLQTERER  
 GRATAEDNVRLTCLVAELQKQWEVTQATQNTVKELQTCQLGELGAAEKEEDYHTALRRLESMLQPLAQE  
 LEATRDSLDDKKNQHLSAFPGLWAMAQQKADTASDTKGRQEPISDAAQEMQELGEKLQALERERTKVEEV  
 NRQQAQLEQLVKELQLKEDARASLERLVKEMAPLQEELSGKGQEQADQLWRRLQELLAHTSSWEEELAE  
 RREKKQQQEEKELLEQEVRSLTRQLQFLETQLAQVVSQHVSDDLEEQKKQLIQDKDHLSSQVGMRLERLAGPP  
 GPPELVAGEKNEALVPVNSSLQEAWGKPEEEQRGLQEAQLDDTKVQEGSQEEELRQANRELEKELQNVVG  
 RNQLLEGKLQALQADYQALQQRESAIQGLASLEAEQASIRHLGDQMEASLLAVRKAKEAMKAQMAEKEA  
 ILQSKEGECQQLREEVEQCQQLAEARHRELRAESQCQQQTQLIEVLTAEKGGQGVGPPTDNEARELAAQ  
 LALSQAQLEVHQGEVQRLQAQVVDLQAKMRAALDDQDKVQSLSMAEAVLREHKTLLVQQKQNEALNRA  
 HVQELLQCSEREGALQEERADEAQQREEELRALQEELSQAACSEEAQLEHAELQEQLHRANTDTAELGI  
 QVCALTVEKERVEEALACAVQELQDAKEAASREREGLERQVAGLQQEESLQEKLKAACAAAGSLPGLQA  
 QLAQAEQRAQSLQEAHQELNLTQKFLSAEIMDYQSRLKNAGEECKSLRGQLEEQGRQLQAAEEAVEKLLK  
 ATQADMGEKLSCTSNHLAECQAAMLRKDKEGAALREDLERTQKELEKATTKIQEYNNKLCQEVNTRERND  
 QKMLADLDDLNRTKKYLEERLIELLRDKDALWQKSDALEFQQKLSAEERWLGDTANHCCLDCKREFSWMV  
 RRHHCRCGRIFCYCCNYYVLSKHGGKKERCCRACFQKLESGPGSPDSSGSGTSQGEPSALSPASPGP  
 QATGGQGANTDYRPPDDAVFDIITDEELCQIQESGSSLPETPTETDSDLPNAAEQDTTSTSLTPEDTEDM  
 PVGQDSEICLLKSGELMIKVPPLTVDEIASFGEGSRELFVRSSTYSLIPITVAEAGLTISWVFSDDPKSIS  
 FSVVFQEAEDTPLDQCKVLIPTRCNENSHKENIQGQLKVRTPGIYMLIFDNTFSRFVSKKVFYHLTVDRPV  
 IYDGSDFL

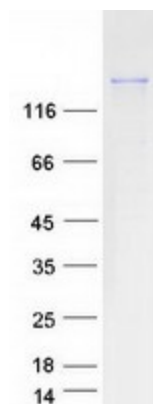
TRTRPLEQKLISEEDLAANDILDYKDDDDKV

**Tag:** C-Myc/DDK



[View online >](#)

<b>Predicted MW:</b>	166.8 kDa
<b>Concentration:</b>	>0.05 µg/µL as determined by microplate BCA method
<b>Purity:</b>	> 80% as determined by SDS-PAGE and Coomassie blue staining
<b>Buffer:</b>	25 mM Tris-HCl, 100 mM glycine, pH 7.3, 10% glycerol
<b>Preparation:</b>	Recombinant protein was captured through anti-DDK affinity column followed by conventional chromatography steps.
<b>Note:</b>	For testing in cell culture applications, please filter before use. Note that you may experience some loss of protein during the filtration process.
<b>Storage:</b>	Store at -80°C.
<b>Stability:</b>	Stable for 12 months from the date of receipt of the product under proper storage and handling conditions. Avoid repeated freeze-thaw cycles.
<b>RefSeq:</b>	<a href="#">NP_078789</a>
<b>Locus ID:</b>	79443
<b>UniProt ID:</b>	<a href="#">Q9BQS8</a>
<b>RefSeq Size:</b>	8518
<b>Cytogenetics:</b>	3p21.31
<b>RefSeq ORF:</b>	4434
<b>Synonyms:</b>	CATC2; CTRCT18; RUFY3; ZFYVE7
<b>Summary:</b>	The gene encodes a Rab7 adapter protein that is implicated in the microtubule transport of autophagosomes. The encoded protein contains a RUN domain, a FYVE-type zinc finger domain, and Golgi dynamics (GOLD) domain. The encoded protein plays a role in microtubule plus end-directed transport of autophagic vesicles through interactions with the small GTPase Rab7, phosphatidylinositol-3-phosphate (PI3P), the autophagosome marker LC3, and the kinesin KIF5. Mutations in this gene are associated with inclusion body myositis (IBM) and autosomal recessive congenital cataracts (CATC2). [provided by RefSeq, Aug 2020]

**Product images:**

Coomassie blue staining of purified FYCO1 protein (Cat# [TP315323]). The protein was produced from HEK293T cells transfected with FYCO1 cDNA clone (Cat# [RC215323]) using MegaTran 2.0 (Cat# [TT210002]).