

Product datasheet for **TP315304M**

C20orf118 (TLDC2) (NM_080628) Human Recombinant Protein

Product data:

Product Type:	Recombinant Proteins
Description:	Recombinant protein of human chromosome 20 open reading frame 118 (C20orf118), 100 µg
Species:	Human
Expression Host:	HEK293T
Expression cDNA Clone or AA Sequence:	>RC215304 protein sequence Red =Cloning site Green =Tags(s)

MRGLRWRYTRLPSQVEDTLSGEEGNEEEEEEAAPDPAAAPEDPTVPQLTEASQVLSASEIRQLSFHFPP
RVTGHPWVSLVFCTSRDGFSLQSLYRRMEGCSGPVLLVLRDQDGQIFGAFSSAIRLSKGFYGTGETFLFS
FSPQLKVKWTGSNSFFVKGDLDLMMGSGSGRFGLWLDGDLFRGGSSPCPTFNNEVLARQEQFCIQEL
E
AWLLS

TRTRPLEQKLISEEDLAANDILDYKDDDDKV

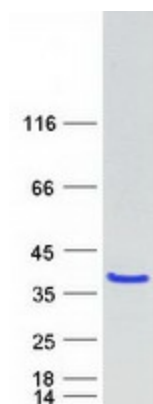
Tag:	C-Myc/DDK
Predicted MW:	23.7 kDa
Concentration:	>0.05 µg/µL as determined by microplate BCA method
Purity:	> 80% as determined by SDS-PAGE and Coomassie blue staining
Buffer:	25 mM Tris-HCl, 100 mM glycine, pH 7.3, 10% glycerol
Preparation:	Recombinant protein was captured through anti-DDK affinity column followed by conventional chromatography steps.
Note:	For testing in cell culture applications, please filter before use. Note that you may experience some loss of protein during the filtration process.
Storage:	Store at -80°C.
Stability:	Stable for 12 months from the date of receipt of the product under proper storage and handling conditions. Avoid repeated freeze-thaw cycles.
RefSeq:	<u>NP_542195</u>
Locus ID:	140711



[View online »](#)

UniProt ID: [A0P1X2](#)
RefSeq Size: 2041
Cytogenetics: 20q11.23
RefSeq ORF: 645
Synonyms: C20orf118

Product images:



Coomassie blue staining of purified TLDC2 protein (Cat# [TP315304]). The protein was produced from HEK293T cells transfected with TLDC2 cDNA clone (Cat# [RC215304]) using MegaTran 2.0 (Cat# [TT210002]).