

Product datasheet for TP315300L

Ceramide synthase 2 (CERS2) (NM_181746) Human Recombinant Protein

Product data:

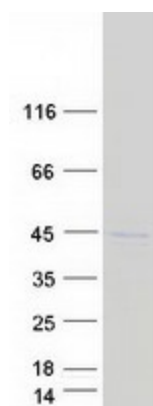
Product Type:	Recombinant Proteins
Description:	Recombinant protein of human LAG1 homolog, ceramide synthase 2 (LASS2), transcript variant 1, 1 mg
Species:	Human
Expression Host:	HEK293T
Expression cDNA Clone or AA Sequence:	>RC215300 protein sequence Red =Cloning site Green =Tags(s)
	<p>MLQTLYDYFWWERLWLPVNLTWADLEDRDGRVYAKASDLYITLPLALLFLIVRYFFELYVATPLAALLNI KEKTRLRAPPNATLEHFYLTSGKQPKQVEVELLSRQSGLSGRQVERWFRRRRNQDRPSLLKKFREASWRF TFYLIAFIAGMAVIVDKPWFYDMKKVWEGYPIQSTIPSQYWYMIELSFYWSLLFSIASDVKRKDFKEQI IHHVATIILISFSWFANYIRAGTLIMALHDSSDYLLS AKMFNYAGWKNTCNNIFIVFAIVFITRLVIL PFWILHCTLVYPLELYPAFFGYFFNSMMGVLQLLHIFWAYLILRMAHKFITGKLVEDERSDREETESSE GEEAAAGGGAKSRPLANGHPILNNNHRKND</p> <p>TRTRPLEQKLISEEDLAANDILDYKDDDDKV</p>
Tag:	C-Myc/DDK
Predicted MW:	44.7 kDa
Concentration:	>0.05 µg/µL as determined by microplate BCA method
Purity:	> 80% as determined by SDS-PAGE and Coomassie blue staining
Buffer:	25 mM Tris-HCl, 100 mM glycine, pH 7.3, 10% glycerol
Preparation:	Recombinant protein was captured through anti-DDK affinity column followed by conventional chromatography steps.
Note:	For testing in cell culture applications, please filter before use. Note that you may experience some loss of protein during the filtration process.
Storage:	Store at -80°C.
Stability:	Stable for 12 months from the date of receipt of the product under proper storage and handling conditions. Avoid repeated freeze-thaw cycles.
RefSeq:	<u>NP_859530</u>



[View online »](#)

Locus ID:	29956
UniProt ID:	Q96G23
RefSeq Size:	2544
Cytogenetics:	1q21.3
RefSeq ORF:	1140
Synonyms:	L3; LASS2; SP260; TMSG1
Summary:	This gene encodes a protein that has sequence similarity to yeast longevity assurance gene 1. Mutation or overexpression of the related gene in yeast has been shown to alter yeast lifespan. The human protein may play a role in the regulation of cell growth. Alternatively spliced transcript variants encoding the same protein have been described. [provided by RefSeq, Jul 2008]
Protein Families:	Transcription Factors, Transmembrane

Product images:



Coomassie blue staining of purified CERS2 protein (Cat# [TP315300]). The protein was produced from HEK293T cells transfected with CERS2 cDNA clone (Cat# [RC215300]) using MegaTran 2.0 (Cat# [TT210002]).