

Product datasheet for TP315298L

LCE3B (NM_178433) Human Recombinant Protein

Product data:

Product Type:	Recombinant Proteins
Description:	Recombinant protein of human late cornified envelope 3B (LCE3B), 1 mg
Species:	Human
Expression Host:	HEK293T
Expression cDNA Clone or AA Sequence:	>RC215298 representing NM_178433 <div> <div>Red</div>=Cloning site <div>Green</div>=Tags(s) </div> <p>MSCQQNQQQCQPLPKCPSPKCPPKSSAQCLPPASSCCAPRPGCCGGPSSEGGCCLSHHRCCRSRRCRR QS SNSCDRGSGQQDGASDCGYGSGGCC</p> <p><div>TR</div><div>TRPLEQKLISEEDLAANDILDYKDDDDKV</div></p>
Tag:	C-Myc/DDK
Predicted MW:	9.6 kDa
Concentration:	>0.05 µg/µL as determined by microplate BCA method
Purity:	> 80% as determined by SDS-PAGE and Coomassie blue staining
Buffer:	25 mM Tris-HCl, 100 mM glycine, pH 7.3, 10% glycerol
Preparation:	Recombinant protein was captured through anti-DDK affinity column followed by conventional chromatography steps.
Note:	For testing in cell culture applications, please filter before use. Note that you may experience some loss of protein during the filtration process.
Storage:	Store at -80°C.
Stability:	Stable for 12 months from the date of receipt of the product under proper storage and handling conditions. Avoid repeated freeze-thaw cycles.
RefSeq:	NP_848520
Locus ID:	353143
UniProt ID:	Q5TA77
RefSeq Size:	288


[View online »](#)

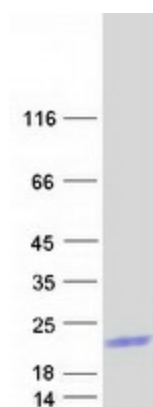
Cytogenetics: 1q21.3

RefSeq ORF: 285

Synonyms: LEP14

Summary: A structural component of the cornified envelope of the stratum corneum involved in innate cutaneous host defense (Probable). Possesses defensin-like antimicrobial activity against a broad spectrum of Gram-positive and Gram-negative bacteria, both aerobic and anaerobic species. Upon inflammation, may regulate skin barrier repair by shaping cutaneous microbiota composition and immune response to bacterial antigens (PubMed:28634035). [UniProtKB/Swiss-Prot Function]

Product images:



Coomassie blue staining of purified LCE3B protein (Cat# [TP315298]). The protein was produced from HEK293T cells transfected with LCE3B cDNA clone (Cat# [RC215298]) using MegaTran 2.0 (Cat# [TT210002]).