

Product datasheet for **TP315298**

LCE3B (NM_178433) Human Recombinant Protein

Product data:

Product Type: Recombinant Proteins

Description: Recombinant protein of human late cornified envelope 3B (LCE3B), 20 µg

Species: Human

Expression Host: HEK293T

Expression cDNA >RC215298 representing NM_178433

Clone or AA Sequence: Red=Cloning site Green=Tags(s)

MSCQQNQQCQPLPKCPSPKCPPKSSAQLPPASSCCAPRPGCCGGPSSEGGCCLSHHRCCRSRHRRRQS
SNSCDRGSQQDGDASDCGYGSGGCC

TRTRPLEQKLISEEDLAANDILDYKDDDDKV

Tag: C-Myc/DDK

Predicted MW: 9.6 kDa

Concentration: >0.05 µg/µL as determined by microplate BCA method

Purity: > 80% as determined by SDS-PAGE and Coomassie blue staining

Buffer: 25 mM Tris-HCl, 100 mM glycine, pH 7.3, 10% glycerol

Preparation: Recombinant protein was captured through anti-DDK affinity column followed by conventional chromatography steps.

Note: For testing in cell culture applications, please filter before use. Note that you may experience some loss of protein during the filtration process.

Storage: Store at -80°C.

Stability: Stable for 12 months from the date of receipt of the product under proper storage and handling conditions. Avoid repeated freeze-thaw cycles.

RefSeq: [NP_848520](#)

Locus ID: 353143

UniProt ID: [Q5TA77](#)

RefSeq Size: 288

Cytogenetics: 1q21.3



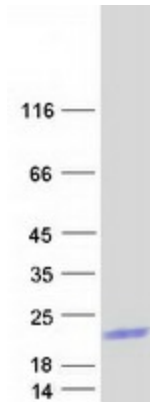
[View online »](#)

RefSeq ORF: 285

Synonyms: LEP14

Summary: A structural component of the cornified envelope of the stratum corneum involved in innate cutaneous host defense (Probable). Possesses defensin-like antimicrobial activity against a broad spectrum of Gram-positive and Gram-negative bacteria, both aerobic and anaerobic species. Upon inflammation, may regulate skin barrier repair by shaping cutaneous microbiota composition and immune response to bacterial antigens (PubMed:28634035).[UniProtKB/Swiss-Prot Function]

Product images:



Coomassie blue staining of purified LCE3B protein (Cat# TP315298). The protein was produced from HEK293T cells transfected with LCE3B cDNA clone (Cat# [RC215298]) using MegaTran 2.0 (Cat# [TT210002]).