

## Product datasheet for **TP315286M**

### Lipin 3 (LPIN3) (NM\_022896) Human Recombinant Protein

#### Product data:

**Product Type:** Recombinant Proteins  
**Description:** Recombinant protein of human lipin 3 (LPIN3), 100 µg  
**Species:** Human  
**Expression Host:** HEK293T  
**Expression cDNA Clone or AA Sequence:** >RC215286 representing NM\_022896  
**Red**=Cloning site **Green**=Tags(s)

MNYVGQLAETVFGTVKELYRGLNPATLSSGGIDVLVVKQVDGFSFRCSPPHVRFGKLGVLRSREKWDIELN  
GEPVDLHMKLGDSGEAFFVQELESDDHEVPPGLCTSPIPWGGLSGFSPDSQLGTASEPEGLVMAGTASTG  
RRKRRRRRKPQKEDAVATDSSPEELEAGAESELSLPEKLRPEPPGVQLEEKSSLQPKDIYPYSDGEWPP  
QASLSAGELTSPKSDSELEVRTPEPSPLRAESHMQAWGRLPKVARAERPESVLEGRAGATSPPRGGP  
STPSTSVAGGVDPGLPIQQTEAGADLQPDTEPTLVGPPLHTPETEESKTQSSGDMGLPPASKSWSWAT  
LEVPVPTGQPERVSRGKGSQHLGSPDIYDDLPSLSDSENAALYFPQSDSGLGARRWSEPSSQKSLR  
DPNPEHEPEPTLDTVDIALSLCGGLADSRDISLEKFNQHSVSYQDLTKNPGLLDDPNLVVKINGKHYNW  
AVAAPMILSLQAFQKNLPKSTMDKLEREKMPRKGGRWWFSWRRRDFLAERSAQKEKTAAKEQQGEKTEV  
LSSDDDAPDSPVILEIPSLPSTPPSTPTYKKSRLSSDQIRRLNLQEGANDVFSVTTQYQGTCTCRCKAT  
IYLWKWDDKVVISDIDGTITKSDALGHILPQLGKDWTHQGITSLYHKIQLNGYKFLYCSARAIGMADLTK  
GYLQWVSEGGCSLPKGPILLSPSSLFSALHREVIEKKPEVFKVACLSDIQQLFLPHGQPFYAAFNGRPNP  
VFAYRQVGLPESRIFTVNPRGELIQELIKNHKSTYERLGEVVELLFPPVARGPSTDLANPEYSNFCYWRE  
PLPAVDLDTLD

**TR**TRPLE**QKLISEEDLAANDILDYKDDDDKV**

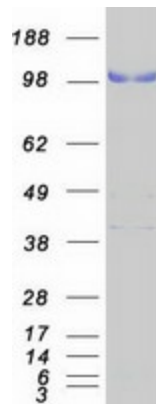
**Tag:** C-Myc/DDK  
**Predicted MW:** 93.4 kDa  
**Concentration:** >0.05 µg/µL as determined by microplate BCA method  
**Purity:** > 80% as determined by SDS-PAGE and Coomassie blue staining  
**Buffer:** 25 mM Tris-HCl, 100 mM glycine, pH 7.3, 10% glycerol  
**Preparation:** Recombinant protein was captured through anti-DDK affinity column followed by conventional chromatography steps.



[View online »](#)

<b>Note:</b>	For testing in cell culture applications, please filter before use. Note that you may experience some loss of protein during the filtration process.
<b>Storage:</b>	Store at -80°C.
<b>Stability:</b>	Stable for 12 months from the date of receipt of the product under proper storage and handling conditions. Avoid repeated freeze-thaw cycles.
<b>RefSeq:</b>	<a href="#">NP_075047</a>
<b>Locus ID:</b>	64900
<b>UniProt ID:</b>	<a href="#">Q9BQK8</a>
<b>RefSeq Size:</b>	4464
<b>Cytogenetics:</b>	20q12
<b>RefSeq ORF:</b>	2553
<b>Synonyms:</b>	dj620E11.2; LIPN3L; SMP2
<b>Summary:</b>	The protein encoded by this gene is a member of the lipin family of proteins, and all family members share strong homology in their C-terminal region. This protein is thought to form hetero-oligomers with other lipin family members, while one family member, lipin 1, can also form homo-oligomers. This protein contains conserved motifs for phosphatidate phosphatase 1 (PAP1) activity as well as a domain that interacts with a transcriptional co-activator. Lipin complexes act in the cytoplasm to catalyze the dephosphorylation of phosphatidic acid to produce diacylglycerol, which is the precursor of both triglycerides and phospholipids. Lipin complexes are also thought to regulate gene expression as transcriptional co-activators in the nucleus. Alternative splicing results in multiple transcript variants. [provided by RefSeq, Sep 2014]

### Product images:



Coomassie blue staining of purified LPIN3 protein (Cat# [TP315286]). The protein was produced from HEK293T cells transfected with LPIN3 cDNA clone (Cat# [RC215286]) using MegaTran 2.0 (Cat# [TT210002]).