

## Product datasheet for **TP315281L**

### IGFL1 (NM\_198541) Human Recombinant Protein

#### Product data:

Product Type:	Recombinant Proteins
Description:	Recombinant protein of human IGF-like family member 1 (IGFL1), 1 mg
Species:	Human
Expression Host:	HEK293T
Expression cDNA Clone or AA Sequence:	>RC215281 representing NM_198541 <b>Red</b> =Cloning site <b>Green</b> =Tags(s)
	MAPRGCIVAVFAIFCISRLLC SHGAPVAPMTPYLMLCQPHKRCGDKFYDPLQHCCYDDAVVPLARTQTCG NCTFRVCFEQCCPWTFMVKLINQNCDSARTSDDRLCRSVS
	<b>TRTRPLEQKLISEEDLAANDILDYKDDDDKV</b>
Tag:	C-Myc/DDK
Predicted MW:	12.2 kDa
Concentration:	>0.05 µg/µL as determined by microplate BCA method
Purity:	> 80% as determined by SDS-PAGE and Coomassie blue staining
Buffer:	25 mM Tris-HCl, 100 mM glycine, pH 7.3, 10% glycerol
Preparation:	Recombinant protein was captured through anti-DDK affinity column followed by conventional chromatography steps.
Note:	For testing in cell culture applications, please filter before use. Note that you may experience some loss of protein during the filtration process.
Storage:	Store at -80°C.
Stability:	Stable for 12 months from the date of receipt of the product under proper storage and handling conditions. Avoid repeated freeze-thaw cycles.
RefSeq:	<a href="#">NP_940943</a>
Locus ID:	374918
UniProt ID:	<a href="#">Q6UW32</a>
RefSeq Size:	771
Cytogenetics:	19q13.32



[View online »](#)

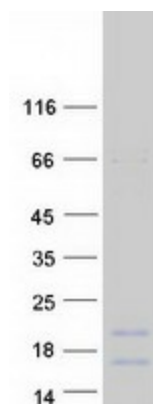
RefSeq ORF: 330

Synonyms: APRG644; UNQ644

**Summary:** The protein encoded by this gene is a member of the insulin-like growth factor family of signaling molecules. The encoded protein is synthesized as a precursor protein and is proteolytically cleaved to form a secreted mature peptide. The mature peptide binds to a receptor, which in mouse was found on the cell surface of T cells. Increased expression of this gene may be linked to psoriasis. [provided by RefSeq, Aug 2016]

**Protein Families:** Secreted Protein, Transmembrane

### Product images:



Coomassie blue staining of purified IGFL1 protein (Cat# [TP315281]). The protein was produced from HEK293T cells transfected with IGFL1 cDNA clone (Cat# [RC215281]) using MegaTran 2.0 (Cat# [TT210002]).