

## Product datasheet for **TP315253M**

### PTCD2 (NM\_024754) Human Recombinant Protein

#### Product data:

Product Type:	Recombinant Proteins
Description:	Recombinant protein of human pentatricopeptide repeat domain 2 (PTCD2), 100 µg
Species:	Human
Expression Host:	HEK293T
Expression cDNA Clone or AA Sequence:	>RC215253 representing NM_024754 <b>Red</b> =Cloning site <b>Green</b> =Tags(s)

MVRDSMAAAFRPSNRVLLQALQILVYPGVGGSGSVSCRCPLGAKRYLLTDNVVKLKEFQQKKVAVACNLS  
GKETYFRNLKKKLTQNKLILKDELITLLHLCESRDHVELAKNVIYRYHAENKNFTLGEYKFGPLFVRLC  
YELDLEESAVELMKDQHLRGFFSDSTSFNILMDMLFIKGYKSALQVLIEMKNQDVKFTKDTYVLAFAIC  
YKLNSPESFKICTTLREEALLKGEILSRRASCFVALALNQNEMAKAVSIFSQIMNPESIACINLNIIH  
IQSNMLENLIKTLKNAAEGNLSKFVKRHFVSEEVLAKVREKVKDVPALVAKFDEIYGLHITGQVTTDSL  
DAVLCHTPRDRKSHTLLLNKRMVSRRTFQPLSQSLLAE

**TRTRPLEQKLISEEDLAANDILDYKDDDDKV**

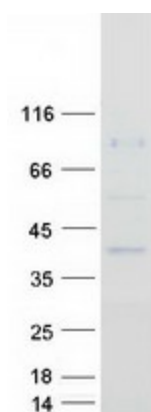
Tag:	C-Myc/DDK
Predicted MW:	43.8 kDa
Concentration:	>0.05 µg/µL as determined by microplate BCA method
Purity:	> 80% as determined by SDS-PAGE and Coomassie blue staining
Buffer:	25 mM Tris-HCl, 100 mM glycine, pH 7.3, 10% glycerol
Preparation:	Recombinant protein was captured through anti-DDK affinity column followed by conventional chromatography steps.
Note:	For testing in cell culture applications, please filter before use. Note that you may experience some loss of protein during the filtration process.
Storage:	Store at -80°C.
Stability:	Stable for 12 months from the date of receipt of the product under proper storage and handling conditions. Avoid repeated freeze-thaw cycles.
RefSeq:	<a href="#">NP_079030</a>
Locus ID:	79810



[View online »](#)

UniProt ID:	<a href="#">Q8WV60</a> , <a href="#">A0A024RAM6</a> , <a href="#">B3KPU6</a>
RefSeq Size:	2103
Cytogenetics:	5q13.2
RefSeq ORF:	1164
Summary:	Involved in mitochondrial RNA maturation and mitochondrial respiratory chain function. [UniProtKB/Swiss-Prot Function]

### Product images:



Coomassie blue staining of purified PTCD2 protein (Cat# [TP315253]). The protein was produced from HEK293T cells transfected with PTCD2 cDNA clone (Cat# [RC215253]) using MegaTran 2.0 (Cat# [TT210002]).