

## Product datasheet for TP315247M

### Integrin beta 1 (ITGB1) (NM\_133376) Human Recombinant Protein

#### Product data:

Product Type:	Recombinant Proteins
Description:	Recombinant protein of human integrin, beta 1 (fibronectin receptor, beta polypeptide, antigen CD29 includes MDF2, MSK12) (ITGB1), transcript variant 1E, 100 µg
Species:	Human
Expression Host:	HEK293T
Expression cDNA Clone or AA Sequence:	>RC215247 protein sequence Red=Cloning site Green=Tags(s)

MNLQPIFWIGLISSVCCVFAQTDENRCLKANAKSCGECIQAGPNCGWCTNSTFLQEGMPTSARCDDLEAL  
 KKKGCPPDDIENPRGSKDIKKNKNVTNRSKGTAEKLPEDITQIQPQQLVLRRLRSGEPQTFTLKFKRAED  
 YPIDLYLMDLSYSMKDDLENVKS LGTDLMNEMRRITSDFRIGFGSFVEKTVMPYISTTPAKLRNPCTSE  
 QNCTSPFSYKNVLSLTNKGEVFNELVGKQRISGNLDSPEGGFDAIMQVAVCGSLIGWRNVTRLLVFSTDA  
 GFHFAGDGKLGIVLPNDGQCHLENNMYTMSHYDYPSIAHLVQKLSENNIQTIFAVTEEFQPVYKELKN  
 LIPKSAVGTLSANSSNVIQLIIDAYNSLSSEVILENGKLESGVTISYKSYCKNGVNGTGENGGRKCSNISI  
 GDEVQFEISITSNKCPKSDSDFKIRPLGFTEEVEVILQYICECECQSEGIPESPKCHEGNGTFECGACR  
 CNEGRVGRHCECSTDEVNSEMDAYCRKENSSEICSNNGECVCGQCVCRRKDNTNEIYSGKFCECDNFNC  
 DRNGLICGGNGVCKCRVCECNPNYTGACDCSLDTSTCEASNGQICNNGRGICECVCKCTDPKFQGGQTC  
 EMCQTCLGVCAEHKECVQCRAFNGEKKDTCTQECSYFNITKVESRDKLPQPVQDPVSHCKEKDVDDCW  
 FYFTYSVNGNNEVMVHVVENPECPTGPDIIPIVAGVAGIVLIGLALLLIWKLLMIIHDRREFAKFEKEK  
 MNAKWDTGENPIYKSAVTTVNPKEYEGK

TRTRPLEQKLISEEDLAANDILDYKDDDDKV

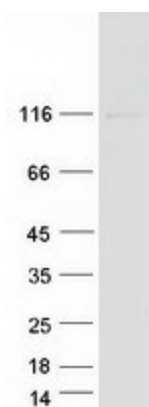
Tag:	C-Myc/DDK
Predicted MW:	86.1 kDa
Concentration:	>0.05 µg/µL as determined by microplate BCA method
Purity:	> 80% as determined by SDS-PAGE and Coomassie blue staining
Buffer:	25 mM Tris-HCl, 100 mM glycine, pH 7.3, 10% glycerol
Preparation:	Recombinant protein was captured through anti-DDK affinity column followed by conventional chromatography steps.



[View online »](#)

<b>Note:</b>	For testing in cell culture applications, please filter before use. Note that you may experience some loss of protein during the filtration process.
<b>Storage:</b>	Store at -80°C.
<b>Stability:</b>	Stable for 12 months from the date of receipt of the product under proper storage and handling conditions. Avoid repeated freeze-thaw cycles.
<b>RefSeq:</b>	<a href="#">NP_596867</a>
<b>Locus ID:</b>	3688
<b>UniProt ID:</b>	<a href="#">P05556</a>
<b>RefSeq Size:</b>	3794
<b>Cytogenetics:</b>	10p11.22
<b>RefSeq ORF:</b>	2394
<b>Synonyms:</b>	CD29; FNRB; GPIIA; MDF2; MSK12; VLA-BETA; VLAB
<b>Summary:</b>	Integrins are heterodimeric proteins made up of alpha and beta subunits. At least 18 alpha and 8 beta subunits have been described in mammals. Integrin family members are membrane receptors involved in cell adhesion and recognition in a variety of processes including embryogenesis, hemostasis, tissue repair, immune response and metastatic diffusion of tumor cells. This gene encodes a beta subunit. Multiple alternatively spliced transcript variants which encode different protein isoforms have been found for this gene. [provided by RefSeq, Jul 2008]
<b>Protein Families:</b>	Druggable Genome, ES Cell Differentiation/IPS, Transmembrane
<b>Protein Pathways:</b>	Arrhythmogenic right ventricular cardiomyopathy (ARVC), Axon guidance, Cell adhesion molecules (CAMs), Dilated cardiomyopathy, ECM-receptor interaction, Focal adhesion, Hypertrophic cardiomyopathy (HCM), Leukocyte transendothelial migration, Pathogenic Escherichia coli infection, Pathways in cancer, Regulation of actin cytoskeleton, Small cell lung cancer

### Product images:



Coomassie blue staining of purified ITGB1 protein (Cat# [TP315247]). The protein was produced from HEK293T cells transfected with ITGB1 cDNA clone (Cat# [RC215247]) using MegaTran 2.0 (Cat# [TT210002]).