

Product datasheet for TP315247L

Integrin beta 1 (ITGB1) (NM_133376) Human Recombinant Protein

Product data:

| | |
|---------------------------------------|----------------------------------------------------------------------------------------------------------------------------------------------------------------|
| Product Type: | Recombinant Proteins |
| Description: | Recombinant protein of human integrin, beta 1 (fibronectin receptor, beta polypeptide, antigen CD29 includes MDF2, MSK12) (ITGB1), transcript variant 1E, 1 mg |
| Species: | Human |
| Expression Host: | HEK293T |
| Expression cDNA Clone or AA Sequence: | >RC215247 protein sequence Red=Cloning site Green=Tags(s) |

MNLQPIFWIGLISSVCCVFAQTDENRCLKANAKSCGECIQAGPNCGWCTNSTFLQEGMPTSARCDDLEAL
 KKKGCPPDDIENPRGSKDIKKNKNVTNRSKGTAEKLPEDITQIQPQQLVLRRLRSGEPQTFTLKFKAED
 YPIDLYLMDLSYSMKDDLENVKS LGTDL MNEMRRITSDFRIGFGSFVEKTVMPYISTTPAKLRNPCTSE
 QNCTSPFSYKNVLSLTNKGEVFNELVGKQRISGNLDSPEGGFDAIMQVAVCGSLIGWRNVTRLLVFSTDA
 GFHFAGDGKLGIVLPNDGQCHLENNMYTMSHYDYPSIAHLVQKLSENNIQTIFAVTEEFQPVYKELKN
 LIPKSAVGTLSANSSNVIQLIIDAYNSLSSEVILENGKLESGVTISYKSYCKNGVNGTGENGGRKCSNISI
 GDEVQFEISITSNKCPKKDSDFKIRPLGFTEEEVILQYICECECQSEGIPESPKCHEGNGTFECGACR
 CNEGRVGRHCECSTDEVNSEMDDAYCRKENSSEICSNNGECVCGQCVCRRKDNTNEIYSGKFCECDNFNC
 DRNGLICGGNGVCKCRVCECNPNYTGACDCSLDTSTCEASNGQICNGRGICECGVCKCTDPKFQGGQTC
 EMCQTCLGVCAEHKECVQCRAFNGEKKDTCTQECSYFNITKVESRDKLPQPVQDPVSHCKEKDVDDCW
 FYFTYSVNGNNEVMVHVVENPECPTGPDIIPIVAGVAGIVLIGLALLLIWKLLMIIHDRREFAKFEKEK
 MNAKWDTGENPIYKSAVTTVVNPKYEGK

TRTRPLEQKLISEEDLAANDILDYKDDDDKV

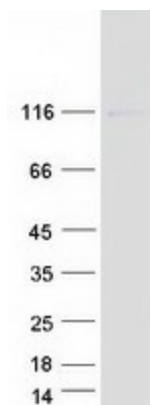
| | |
|----------------|------------------------------------------------------------------------------------------------------------------|
| Tag: | C-Myc/DDK |
| Predicted MW: | 86.1 kDa |
| Concentration: | >0.05 µg/µL as determined by microplate BCA method |
| Purity: | > 80% as determined by SDS-PAGE and Coomassie blue staining |
| Buffer: | 25 mM Tris-HCl, 100 mM glycine, pH 7.3, 10% glycerol |
| Preparation: | Recombinant protein was captured through anti-DDK affinity column followed by conventional chromatography steps. |



[View online »](#)

| | |
|--------------------------|---------------------------------------------------------------------------------------------------------------------------------------------------------------------------------------------------------------------------------------------------------------------------------------------------------------------------------------------------------------------------------------------------------------------------------------------------------------------------------------------------------------------------------------------------------------------------|
| Note: | For testing in cell culture applications, please filter before use. Note that you may experience some loss of protein during the filtration process. |
| Storage: | Store at -80°C. |
| Stability: | Stable for 12 months from the date of receipt of the product under proper storage and handling conditions. Avoid repeated freeze-thaw cycles. |
| RefSeq: | NP_596867 |
| Locus ID: | 3688 |
| UniProt ID: | P05556 |
| RefSeq Size: | 3794 |
| Cytogenetics: | 10p11.22 |
| RefSeq ORF: | 2394 |
| Synonyms: | CD29; FNRB; GPIIA; MDF2; MSK12; VLA-BETA; VLAB |
| Summary: | Integrins are heterodimeric proteins made up of alpha and beta subunits. At least 18 alpha and 8 beta subunits have been described in mammals. Integrin family members are membrane receptors involved in cell adhesion and recognition in a variety of processes including embryogenesis, hemostasis, tissue repair, immune response and metastatic diffusion of tumor cells. This gene encodes a beta subunit. Multiple alternatively spliced transcript variants which encode different protein isoforms have been found for this gene. [provided by RefSeq, Jul 2008] |
| Protein Families: | Druggable Genome, ES Cell Differentiation/IPS, Transmembrane |
| Protein Pathways: | Arrhythmogenic right ventricular cardiomyopathy (ARVC), Axon guidance, Cell adhesion molecules (CAMs), Dilated cardiomyopathy, ECM-receptor interaction, Focal adhesion, Hypertrophic cardiomyopathy (HCM), Leukocyte transendothelial migration, Pathogenic Escherichia coli infection, Pathways in cancer, Regulation of actin cytoskeleton, Small cell lung cancer |

Product images:



Coomassie blue staining of purified ITGB1 protein (Cat# [TP315247]). The protein was produced from HEK293T cells transfected with ITGB1 cDNA clone (Cat# [RC215247]) using MegaTran 2.0 (Cat# [TT210002]).