

Product datasheet for **TP315235L**

IL21 (NM_021803) Human Recombinant Protein

Product data:

Product Type:	Recombinant Proteins
Description:	Recombinant protein of human interleukin 21 (IL21), 1 mg
Species:	Human
Expression Host:	HEK293T
Expression cDNA Clone or AA Sequence:	>RC215235 representing NM_021803 Red =Cloning site Green =Tags(s)
	MRSSPGNMERIVICLMVIFLGTLVHKSSSQGQDRHMIRMRLIDIVDQLKNYVNDLVPEFLPAPEDVETN CEWSAFSCFQKAQLKSANTGNNERIINVSIIKLLKRKPPSTNAGRRQKHRLTCPCSDSYEKKPPKEFLERF KSLQKMIHQHLSRTHGSEDS
	TRTRPLEQKLISEEDLAANDILDYKDDDDKV
Tag:	C-Myc/DDK
Predicted MW:	18.5 kDa
Concentration:	>0.05 µg/µL as determined by microplate BCA method
Purity:	> 80% as determined by SDS-PAGE and Coomassie blue staining
Buffer:	25 mM Tris-HCl, 100 mM glycine, pH 7.3, 10% glycerol
Preparation:	Recombinant protein was captured through anti-DDK affinity column followed by conventional chromatography steps.
Note:	For testing in cell culture applications, please filter before use. Note that you may experience some loss of protein during the filtration process.
Storage:	Store at -80°C.
Stability:	Stable for 12 months from the date of receipt of the product under proper storage and handling conditions. Avoid repeated freeze-thaw cycles.
RefSeq:	NP_068575
Locus ID:	59067
UniProt ID:	Q9HBE4 , A0A224B028
RefSeq Size:	642



[View online »](#)

Cytogenetics: 4q27

RefSeq ORF: 486

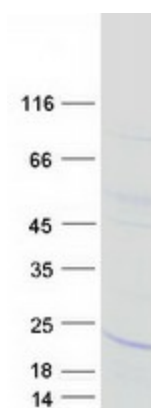
Synonyms: CVID11; IL-21; Za11

Summary: This gene encodes a member of the common-gamma chain family of cytokines with immunoregulatory activity. The encoded protein plays a role in both the innate and adaptive immune responses by inducing the differentiation, proliferation and activity of multiple target cells including macrophages, natural killer cells, B cells and cytotoxic T cells. Dysregulation of this gene plays a role in multiple immune-mediated diseases including lupus, psoriasis and chronic inflammatory diseases. Alternatively spliced transcript variants encoding multiple isoforms have been observed for this gene. [provided by RefSeq, Dec 2011]

Protein Families: Druggable Genome, Secreted Protein

Protein Pathways: Cytokine-cytokine receptor interaction, Jak-STAT signaling pathway

Product images:



Coomassie blue staining of purified IL21 protein (Cat# [TP315235]). The protein was produced from HEK293T cells transfected with IL21 cDNA clone (Cat# [RC215235]) using MegaTran 2.0 (Cat# [TT210002]).