

## Product datasheet for **TP315213M**

### **Bcl G (BCL2L14) (NM\_138723) Human Recombinant Protein**

#### Product data:

Product Type:	Recombinant Proteins
Description:	Recombinant protein of human BCL2-like 14 (apoptosis facilitator) (BCL2L14), transcript variant 4, 100 µg
Species:	Human
Expression Host:	HEK293T
Expression cDNA Clone or AA Sequence:	>RC215213 protein sequence <b>Red</b> =Cloning site <b>Green</b> =Tags(s)

MCSTSGCDLEEIPLDDDDLNTIEFKILAYYTRHHVFKSTPALFSPKLLRTRLSQRGLGNCANESWTEV  
SWPCRNSQSSEKAINLGKKSSWKAFFGWVEKEDSQSTPAKVSAQGQRTLEYQDSHSQQWSRCLSNVEQC  
LEHEAVDPKVISIANRVAEIVSWPPPQATQAGGFKSKEIFVTEGLSFQLQGHVPVASSKKDEEEQILA  
KIVELLKYSQDQLERKLLKDKALMGHFQDGLSYSVFKTITDQVLMGVDPRGESEVKAQGFKAAALVIDVTA  
KLT AIDNHPMNRVLGFGTKYLKENFSPWIQQHGGWEKILGISHEEVD

**TRTRPLEQKLISEEDLAANDILDYKDDDDKV**

Tag:	C-Myc/DDK
Predicted MW:	36.4 kDa
Concentration:	>0.05 µg/µL as determined by microplate BCA method
Purity:	> 80% as determined by SDS-PAGE and Coomassie blue staining
Buffer:	25 mM Tris-HCl, 100 mM glycine, pH 7.3, 10% glycerol
Preparation:	Recombinant protein was captured through anti-DDK affinity column followed by conventional chromatography steps.
Note:	For testing in cell culture applications, please filter before use. Note that you may experience some loss of protein during the filtration process.
Storage:	Store at -80°C.
Stability:	Stable for 12 months from the date of receipt of the product under proper storage and handling conditions. Avoid repeated freeze-thaw cycles.
RefSeq:	<u><a href="#">NP_620049</a></u>
Locus ID:	79370



[View online »](#)

UniProt ID: [Q9BZR8](#), [A0A024RAR1](#)

RefSeq Size: 1930

Cytogenetics: 12p13.2

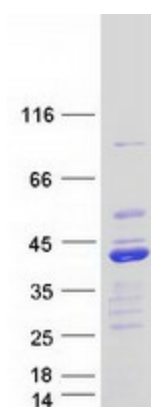
RefSeq ORF: 981

Synonyms: BCLG

**Summary:** The protein encoded by this gene belongs to the BCL2 protein family. BCL2 family members form hetero- or homodimers and act as anti- or pro-apoptotic regulators that are involved in a wide variety of cellular activities. Overexpression of this gene has been shown to induce apoptosis in cells. Three alternatively spliced transcript variants encoding two distinct isoforms have been reported for this gene. [provided by RefSeq, May 2009]

**Protein Families:** Druggable Genome

### Product images:



Coomassie blue staining of purified BCL2L14 protein (Cat# [TP315213]). The protein was produced from HEK293T cells transfected with BCL2L14 cDNA clone (Cat# [RC215213]) using MegaTran 2.0 (Cat# [TT210002]).