

Product datasheet for **TP315200M**

SAPCD1 (NM_001039651) Human Recombinant Protein

Product data:

Product Type:	Recombinant Proteins
Description:	Recombinant protein of human chromosome 6 open reading frame 26 (C6orf26), 100 µg
Species:	Human
Expression Host:	HEK293T
Expression cDNA Clone or AA Sequence:	>RC215200 representing NM_001039651 Red =Cloning site Green =Tags(s) MGSQGSGGVPLVQAPYTVLLLPLGTSRQDPGAQSFFLWLRMQALEREQDALWQGLELLQHGWAWFE DHL REAQRQQLHLGALGENFLTDLHSEPGRPPLAQIQKVNICLQNLIEHKFSPSPLNKASSCTTQDSKERRRE QNLWQQQELSRQQKGVTPKEEMAQRGCTKGPRGPTRV TRTRPLEQKLISEEDLAANDILDYKDDDDKV
Tag:	C-Myc/DDK
Predicted MW:	20 kDa
Concentration:	>0.05 µg/µL as determined by microplate BCA method
Purity:	> 80% as determined by SDS-PAGE and Coomassie blue staining
Buffer:	25 mM Tris-HCl, 100 mM glycine, pH 7.3, 10% glycerol
Preparation:	Recombinant protein was captured through anti-DDK affinity column followed by conventional chromatography steps.
Note:	For testing in cell culture applications, please filter before use. Note that you may experience some loss of protein during the filtration process.
Storage:	Store at -80°C.
Stability:	Stable for 12 months from the date of receipt of the product under proper storage and handling conditions. Avoid repeated freeze-thaw cycles.
RefSeq:	<u>NP_001034740</u>
Locus ID:	401251
UniProt ID:	<u>Q5SSQ6</u>


[View online »](#)

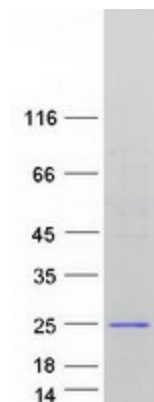
RefSeq Size: 917

Cytogenetics: 6p21.33

RefSeq ORF: 534

Synonyms: C6orf26; NG23

Product images:



Coomassie blue staining of purified SAPCD1 protein (Cat# [TP315200]). The protein was produced from HEK293T cells transfected with SAPCD1 cDNA clone (Cat# [RC215200]) using MegaTran 2.0 (Cat# [TT210002]).