

## Product datasheet for **TP315165L**

### beta Synuclein (SNCB) (NM\_001001502) Human Recombinant Protein

#### Product data:

**Product Type:** Recombinant Proteins

**Description:** Recombinant protein of human synuclein, beta (SNCB), transcript variant 1, 1 mg

**Species:** Human

**Expression Host:** HEK293T

**Expression cDNA Clone  
or AA Sequence:** >RC215165 protein sequence  
**Red**=Cloning site **Green**=Tags(s)

MDVFMKGLSMAKEGVVAAAEEKTKQGVTEAAEKTKEGVLYVGSKTREGVWQGVASVAEKTKEQASHLGGAV  
FSGAGNIAAATGLVKREEFPTDLKPEEVAQEAEEPLIEPLMEPEGESYEDPPQEEYQEYEPEA

**TRTRPLEQKLISEEDLAANDILDYKDDDDKV**

**Tag:** C-Myc/DDK

**Predicted MW:** 14.1 kDa

**Concentration:** >0.05 µg/µL as determined by microplate BCA method

**Purity:** > 80% as determined by SDS-PAGE and Coomassie blue staining

**Buffer:** 25 mM Tris-HCl, 100 mM glycine, pH 7.3, 10% glycerol

**Preparation:** Recombinant protein was captured through anti-DDK affinity column followed by conventional chromatography steps.

**Note:** For testing in cell culture applications, please filter before use. Note that you may experience some loss of protein during the filtration process.

**Storage:** Store at -80°C.

**Stability:** Stable for 12 months from the date of receipt of the product under proper storage and handling conditions. Avoid repeated freeze-thaw cycles.

**RefSeq:** [NP\\_001001502](#)

**Locus ID:** 6620

**UniProt ID:** [Q16143](#)

**RefSeq Size:** 1467

**Cytogenetics:** 5q35.2

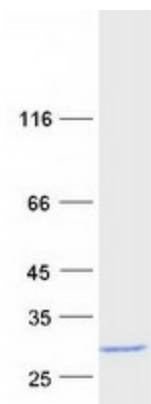


[View online »](#)

RefSeq ORF: 402

**Summary:** This gene encodes a member of a small family of proteins that inhibit phospholipase D2 and may function in neuronal plasticity. The encoded protein is abundant in lesions of patients with Alzheimer disease. A mutation in this gene was found in individuals with dementia with Lewy bodies. Alternative splicing results in multiple transcript variants. [provided by RefSeq, Dec 2015]

### Product images:



Coomassie blue staining of purified SNCB protein (Cat# [TP315165]). The protein was produced from HEK293T cells transfected with SNCB cDNA clone (Cat# [RC215165]) using MegaTran 2.0 (Cat# [TT210002]).