

## Product datasheet for **TP315140**

### **FAM161A (NM\_032180) Human Recombinant Protein**

#### **Product data:**

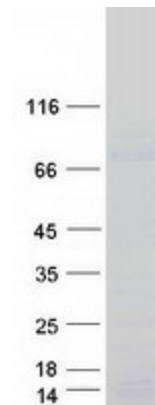
<b>Product Type:</b>	Recombinant Proteins
<b>Description:</b>	Recombinant protein of human family with sequence similarity 161, member A (FAM161A)
<b>Species:</b>	Human
<b>Expression Host:</b>	HEK293T
<b>Expression cDNA Clone or AA Sequence:</b>	>RC215140 representing NM_032180 <b>Red</b> =Cloning site <b>Green</b> =Tags(s)
	<p>MAKLEKMYQDKLHLKEVQPVVIREDSLSDSSRSVSEKNSYHPVSLMTSFSEPDLGQSSSLYVSSSEELP NLEKEYPRKNRMMTYAKELINNMTDFCVEDYIRCKDTGFHAAEKRRKKRKEWVPTITVPEPFQMMIRE Q KKKEESMKS KSDIEMVHKALKKKQEEDPEYKKKFRANPVPASVFLPLYHDLVKQKEERRRSLKEKSKEALL ASQKPFKFIAREEQKRAAREKQLRDFLKYKKKTNRFKARPIRSTYGSTTNDKLKEEELYNLRTQLRAQ EHLQNSSPLPCRSACGCRNPRCPEQAVKLKCKHKVRCPTPDFEDLPERYQKHLSEHKSPKLLTVCKPFDL HASPHASIKREKILADIEADEENLKETRWPYLSRRKSPVRCAGVNPVPCNCPVPVTVSSRGREQAVRK SEKERMREYQRELEEREELKKRPLLFERVAQKNARMAAEKHYSNTLKGISDEFVSKKGQSGKVLEYF NNQETKSVTEDKESFNEEEEKIEERENGEEENYFIDTNSQDSYKEKDEANEESEEEKSVEESH</p> <p><b>TRTRPLEQKLISEEDLAANDILDYKDDDDKV</b></p>
<b>Tag:</b>	C-Myc/DDK
<b>Predicted MW:</b>	64.7 kDa
<b>Concentration:</b>	>0.05 µg/µL as determined by microplate BCA method
<b>Purity:</b>	> 80% as determined by SDS-PAGE and Coomassie blue staining
<b>Buffer:</b>	25 mM Tris-HCl, 100 mM glycine, pH 7.3, 10% glycerol
<b>Preparation:</b>	Recombinant protein was captured through anti-DDK affinity column followed by conventional chromatography steps.
<b>Note:</b>	For testing in cell culture applications, please filter before use. Note that you may experience some loss of protein during the filtration process.
<b>Storage:</b>	Store at -80°C.



[View online »](#)

<b>Stability:</b>	Stable for 12 months from the date of receipt of the product under proper storage and handling conditions. Avoid repeated freeze-thaw cycles.
<b>RefSeq:</b>	<a href="#">NP_115556</a>
<b>Locus ID:</b>	84140
<b>UniProt ID:</b>	<a href="#">Q3B820</a>
<b>RefSeq Size:</b>	1929
<b>Cytogenetics:</b>	2p15
<b>RefSeq ORF:</b>	1653
<b>Synonyms:</b>	RP28
<b>Summary:</b>	This gene belongs to the FAM161 family. It is expressed mainly in the retina. Mouse studies suggested that this gene is involved in development of retinal progenitors during embryogenesis, and that its activity is restricted to mature photoreceptors after birth. Mutations in this gene cause autosomal recessive retinitis pigmentosa-28. Alternatively spliced transcript variants have been identified.[provided by RefSeq, Jan 2011]

### Product images:



Coomassie blue staining of purified FAM161A protein (Cat# TP315140). The protein was produced from HEK293T cells transfected with FAM161A cDNA clone (Cat# [RC215140]) using MegaTran 2.0 (Cat# [TT210002]).